

PHILIPS

Compact Care Hair dryer

1000W

2 flexible speed settings

HP8110/22



Easy care for your hair

The hair dryer with compact size and nice design, quickly dry your hair.

Easy to use

- Compact design for easy handling
- Easy storage hook for convenient storage

Beautifully styled hair

- 1000 W for beautiful results
- Concentrator focuses the airflow

Less hair damage

- 2 flexible speed settings for careful drying

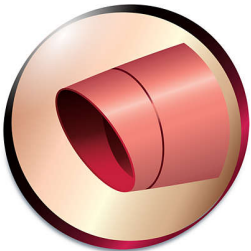
Highlights

2 flexible speed settings



This compact hair dryer offers you 2 pre-selected heat & speed combinations for an easy, quick and caring blow dry.

Concentrator



The concentrator works by focusing the flow of air through the opening onto specific areas. This results in a more precise styling and quick drying.

Easy storage hook

The rubberised hook is located at the base of the handle and provides another storage option, particularly convenient for use in the home or when staying at a hotel.

1000 W



This 1000W hairdryer creates the optimum level of airflow and gentle drying power, for beautiful results every day.

Compact design



Compact and ergonomic, this hairdryer benefits from a clever modern design. This results in a dryer that is light and easy to handle yet small enough to store virtually anywhere.

Specifications

Accessories

Attachments: Nozzle

Technical specifications

Cord length: 1.5 m

Wattage: 1000 W

Voltage: 220 V

Design

Color: Pink

Features

Hanging loop

Storage hook

Service

2-year guarantee

