



Philips  
Hairdryer

2100W

IonBoost  
Ceramic diffuser

HP4891/17

# Professional voluminous results

## SalonPro

Want to dry your hair like the professionals? The SalonPro – with 2100W of superior drying power – is the hairdryer you need if you're looking to recreate that salon style blow dry.

### Easy to use

- Salon length 3m power cord for maximum flexibility

### Beautifully styled hair

- Volume diffuser enhances volume, for curls and bouncy styles
- Digital heat settings to ensure super smooth results
- Professional 2100W for perfect salon results
- 9 flexible speed & temperature settings for maximum control
- Ultra narrow concentrator for precise styling

### Less Hair Damage

- Ceramic element to smooth your hair
- Ion conditioning for shiny, frizz free hair
- EHD+ technology for more protection and shinier results

### Long lasting styles

- Cool Shot sets your style

# PHILIPS

# Highlights

## Professional 2000W



This 2000W professional hairdryer creates a powerful airflow. The resulting combination of power and speed makes drying and styling your hair quicker and easier.

## Digital heat settings



Digital heat settings make it easy to quickly choose the function you need or adjust the styling temperature using the digital display. This enables you to select the perfect temperature for your specific hair and needs. The result is perfect styling at the touch of a button.

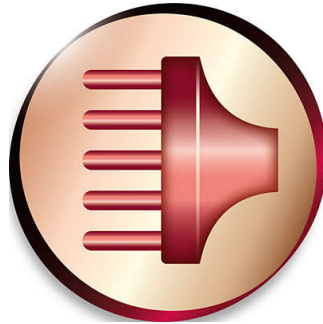
## 9 flexible speed/temp settings



The speed and heat required can be easily adjusted to create the perfect end result. Nine

different settings ensure maximum control for precise and tailored styling.

## Volume diffuser

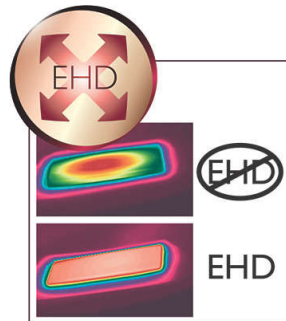


The volume diffuser dries hair healthily, reduces frizz and increases volume by spreading the airflow across the hair. It adds lift and maximises volume, especially when used on the crown and root area, making it perfect for creating curls and bouncy styles

## Ultra narrow concentrator 15mm

The concentrator works by directing the flow of air through the ultra narrow opening on to specific areas. This results in very precise styling and is great for touch ups or to finish a style.

## EHD+ technology



Advanced Philips EHD+ technology means that your dryer will always distribute the heat very evenly - even at high temperatures, and prevents damaging hot spots. This gives added protection and thus helps to keep your hair healthy and shiny.

## Ceramic element



The ceramic element is included to prevent overdrying. It issues infrared heat, which has a gentle warmth which helps dries your hair from within and protects it from overdrying, without compromising on speed and effectiveness.

## Ion conditioning



Give your hair an instant boost with ionic conditioning. Charged negative ions eliminate static, condition the hair and smooth down the hair cuticles to intensify the hair's shine and glossiness. The result is hair that is beautifully shiny, smooth and frizz-free.

Hairdryer  
2100W IonBoost, Ceramic diffuser

HP4891/17

# Specifications

## Technical specifications

- Cord length: 3 m
- Wattage: 2000 W

## Serviceability

- Replacement



Issue date 2022-06-25

Version: 3.0.1

© 2022 Koninklijke Philips N.V.  
All Rights reserved.

Specifications are subject to change without notice.  
Trademarks are the property of Koninklijke Philips N.V.  
or their respective owners.

[www.philips.com](http://www.philips.com)