

# PHILIPS

Shaving heads

Shaver series 3000

ComfortCut blades

Fits S3000 (S3xxx)

Fits S1000 (S1xxx)

Fits Star Wars Shaver SW37xx

SH30/50

## Reset your shaver to new

Change heads every 2 years for best results

Within two years your shaver heads cut 9 million hairs on your face. Replace the shaver heads and get back to 100% performance. Compatible with the Series 3000 and Series 1000 Shaver.

### **Easy to use**

- Easy to replace shaving heads
- Replace your shaving heads in just two steps
- Reset your shaver after replacing shaving heads

### **Compatibility**

- Replacement heads for Shaver series 3000 and 1000

# Shaver series 3000

Shaving heads

SH30/50

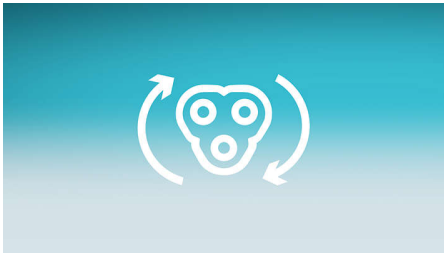
## Highlights

### Compatibility



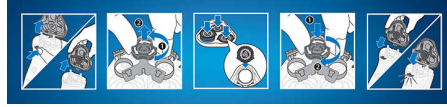
SH30 (3 pack) replacement heads are compatible with Shaver series 3000 (S3xxx), series 1000 (S1xxx) and Star Wars shaver SW3700.

### Replacement reminder



The latest Philips shavers have an inbuilt replacement reminder in the form of a shaving unit symbol. This symbol will light up and indicate you when to replace shaving heads.

### Simple replacement



1. Open the shaver by pressing the "release" button;
2. Remove the retainer by turning the lock counterclockwise;
3. Take out the old shaving heads and carefully insert replacements; check that the heads align exactly in the setting;
4. Replace the retainer and secure it by turning the lock clockwise;
5. When you close the shaving head properly, you will hear it click into place.

### Reset your shaver to new



The latest Philips shavers have an inbuilt replacement reminder which will indicate you when to replace shaving heads. After replacing shaving heads, you can reset replacement trigger by pressing the on/off button for more than 7 seconds. Otherwise, replacement trigger will turn off automatically after 9 successive shaves.

## Specifications

### Shaving heads

**Fits product type:** Shaver series 3000 (S3xxx), Shaver series 1000 (S1xxx)  
**Shaving heads per packaging:** 3

### Cleaning

**Usage:** Use cleaning spray HQ110

