

PHILIPS

NORELCO

Powerful precision
beard styler

GoStyler

DualCut beard trimmer

Detail shaver attachment

Fully washable, AA battery

3 precision beard combs



FS9185/49

Trim and Shape

DualCut technology for a fast and powerful trim

The Philips Norelco GoStyler gives power and precision to trim, shape & shave facial hair. Trim & shape your beard evenly with the advanced DualCut trimmer & 3 precision combs. Define precise lines, edges & contours with the detail shaver.

Easy to use

- Water resistant for use in the shower & easy cleaning
- Rubber grip for easy hold, even when wet
- AA battery included
- Brush for easy cleaning of the precision trimmer

Built to last

- The blades never need to be oiled
- Warranty for purchase protection

Trim with maximum power

- Double-sharpened cutting element for perfect edging
- Trim & shape stubble, goatee, sideburns, neckline, mustache

Shape, edge, define precise lines with comfort

- Detail shaver for perfect lines, edges & contours
- Rounded tips ensure a smooth glide on the skin
- 1, 3, 5mm (1/32", 1/8", 3/16") combs for maintaining a stubb

Highlights

No oil needed, ever



No need to oil ever, for easy maintenance.

DualCut Technology



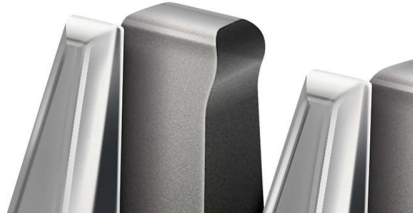
Advanced DualCut Technology combines a double-sharpened cutting element with low-friction engineering. The innovative cutting element is designed to cut hair sharper and faster than predecessor.

DualCut precision trimmer



The 21mm (13/16") precision trimmer helps you trim & shape your facial style (stubble, goatee, sideburns, neckline or mustache) with high control and visibility.

Rounded tips



The cutting element has specially rounded tips to prevent skin irritations and ensure a smooth, comfortable trim.

Skin-friendly detail shaver



Define the edges of your style with the click-on 21mm (13/16") detail shaver. The detail foil shaver is designed to fit into tight spaces with more precision than a blade, so nothing gets in the way of your perfect style.

Water resistant



The trimmer and the combs are Water resistant and easy to clean under the faucet after each use.

3 precision combs



Maintain the uniform length of your stubble, goatee and mustache with the 1mm, 3mm, and 5mm (1/32", 1/8" and 3/16") click-on precision combs.

Soft rubber grip



The soft-touch rubber grip gives you the best hold, even when wet, for better control when operating your trimmer.

Brush



The brush keeps the blade clean after use.

Specifications

Accessories

Maintenance: Cleaning brush

Power

Power supply: AA battery

Design

Color: Black and red

Finishing: Plastic and rubber

Service

2-year worldwide warranty

Cutting system

Cutting element: Stainless steel blades

Number of length settings: 4

Cutter width detail trimmer: 21mm (13/16")

Detail foil shaver: 21mm (13/16")

3 precision beard combs: 1, 3, 5mm (1/32", 1/8", 3/16")

Ease of use

Maintenance free: No oil needed

Cleaning: Fully washable

