

# PHILIPS

## Hair Dryer

### 5000 Series

2300W

ThermoShield technology

Mineral ionic & 2x ionic care\*

3 heat & 2 speed settings



BHD530/03



## Fast drying with no heat damage\*\* with ThermoShield technology

ThermoShield technology gives you ultimate protection from heat damage, by actively controlling the air temperature of the dryer to an optimum level.

#### Beautifully styled hair

- Precise control with 6 heat and speed settings
- Slim nozzle for touch-ups and detailed styling

#### Care and protect

- A powerful motor creates air speeds of up to 110 km/h\*\*\*\*
- Reduces UV damage\*\*\*\*, for smoother hair
- 2x ionic care\* for shiny, frizz-free hair

#### Powerful drying

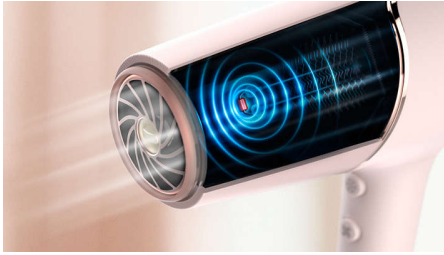
- 20%\*\*\* faster drying with a powerful 2300W airflow
- Cool air setting to finish your style

#### ThermoShield technology

- ThermoShield technology for ultimate heat protection

# Highlights

## ThermoShield technology



The overheat detect sensor actively optimizes and controls the air temperature, protecting your hair from damage\*\* caused by overheating. Enjoy a stress-free drying experience with ThermoShield technology.

## 20%\*\*\* faster drying



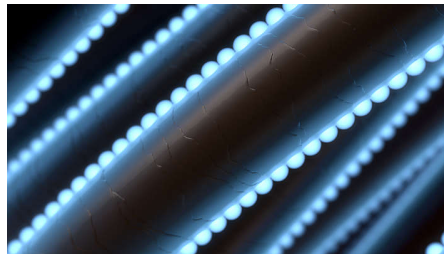
A more powerful airflow of 2300W makes drying 20%\*\* faster, while still protecting your hair.

## 110 km/h air speed\*\*\*\*



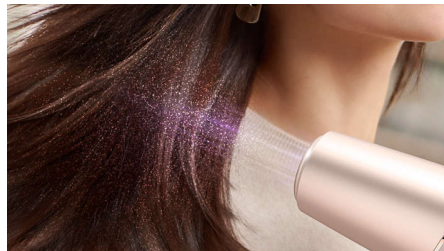
This hairdryer's high-performance motor has been developed for the professional market. It generates an air speed of up to 110 km/h\*\*\*\*, for fast drying and impressive styling.

## Mineral ionic care



Mineral ions reduce surface damage\*\*\*\*\* which can be caused by UV rays, making your hair smoother and more versatile.

## 2x ionic care\*



This powerful ionic system generates up to 40 million ions per drying session, intensifying your hair's shine. So you can enjoy glossy, frizz-free hair.

## 6 heat and speed settings



Easily pick the combination of heat and speed that works best for your hair and style. Six different settings ensure precise control for tailored styling.

## Cool air setting



The cool air setting provides a burst of cold air to finish and hold your style.

## 11 mm styling nozzle



The slim nozzle precisely focuses the air, for quick touch-ups and perfecting small details of your style.

# Specifications

## Attachments

Nozzle: 11 mm  
Volume diffuser

## Technical specifications

Cord length: 1.8 m  
Voltage: 220-240 V  
Wattage: 2300 W  
Motor: DC  
Color / Finishing: Pearl Peach

## Features

Storage hook  
Heat/Speed settings: 6  
Cool Shot

## Service

2-year worldwide warranty

## Caring technologies

Ionic technology: 2x ions\*  
ThermoShield technology  
Mineral ionic care

