

PHILIPS

Straightener

SalonStraight

Essential

HP8309



Straight hair made easy

SalonStraight Essential

Straighten your hair with this easy to use straightener

Ease of use

- Easy lock for convenient storage
- 1.8 m power cord
- Universal voltage
- Fast heat up time, ready to use in 60 seconds
- Swivel cord to prevent tangled wires

Beautifully styled hair

- 210°C professional high heat for perfect salon results
- Ceramic plates for smooth gliding and shiny hair

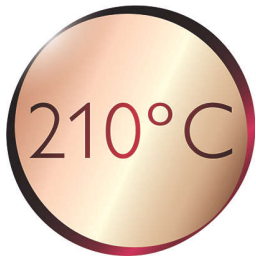
Highlights

Ceramic plates



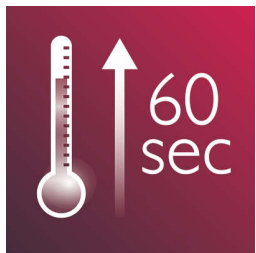
Ceramic plates for smooth gliding and shiny hair

210°C professional temperature



This high temperature enables you to change the shape of your hair, and gives you that perfect look like you've just come from the salon.

Instant heat up



The straightener has a fast heat up time, being ready to use in 60 seconds

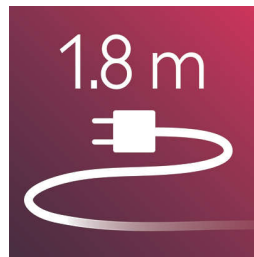
Easy lock

Easy lock for convenient storage

Swivel cord

Useful swivel cord technology rotates the cord to prevent tangled wires.

1.8 m cord



1.8 m power cord

Universal voltage



Worldwide voltage for getting the perfect travel companion

Specifications

Hair type

End result: Straight

Hair length: Long, Medium, Short

Hair thickness: Medium, Thick, Thin

Technical specifications

Cord length: 1.8 m

Voltage: 110-240 V

Heating time: 60s

Maximum temperature: 210 °C

Heater type: PTC

Features

Ceramic coating

Temperature: 210 °C

Swivel cord

Service

2-year worldwide guarantee

