

PHILIPS

Airstyler

5 styling attachments

3 flexible speed settings

Compact design

HP8651/00



Create more styles with care

Salon Airstylist Pro

What hair style do you want today? The Salon Airstylist has five versatile styling attachments and 650W of power so you can get creative with your hair styles

Easy to use

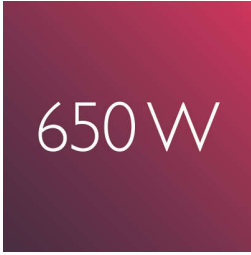
- Three flexible settings for more control
- 1.8 m power cord
- Compact design for easy handling
- Easy storage hook for convenient storage

Beautifully styled hair

- Shaping brush for easy shiny styles
- Narrow concentrator for focused airflow
- 38mm thermo brush to smoothen your hair
- 650W for beautiful results
- Retractable bristle brush for easy curling
- Straightening comb catches and guides the hair easily

Highlights

650W



This airstyler has a low level 650W heater for gentle yet effective drying and styling.

Compact design



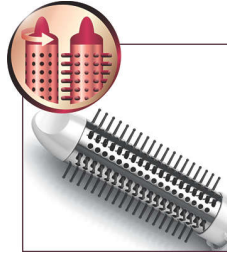
Compact and ergonomic, this styler benefits from a clever modern design. This results in a styler that is light and easy to handle yet small enough to store virtually anywhere.

Three flexible settings



The speed and heat required can be easily adjusted to create the perfect end result. Three flexible settings ensure precise and tailored styling.

Retractable bristle brush



This easy to use airstyler is both a styling brush and curler in one. The bristles retract into the brush at the touch of a button, so you can easily slide the styler out of your hair. What's left is a beautiful bouncy curl.

Shaping brush

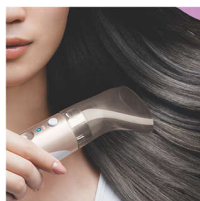


Brush and dry your hair at the same time with this easy to use attachment. The brush combined with the directed airflow will leave your hair smooth and shiny.

Straightening comb

The airflow is directed on to the comb as it glides through the hair to achieve beautiful straight results easier than ever. The comb can be used for precision straightening or for touch ups.

Narrow concentrator



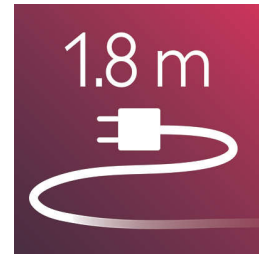
The concentrator of the hair dryer works by focusing the flow of air through the opening onto specific areas. This results in precise styling and is great for touch ups or to finish a hair style.

Easy storage hook



The rubberised hook is located at the base of the handle and provides another storage option, particularly convenient for use in the home or when staying at a hotel.

1.8 m cord



1.8 m power cord

38mm thermo brush



The thermo brush has an extra wide diameter of 38mm. The width of the barrel makes it the perfect styling tool for creating smooth styles and waves.

Specifications

Technical specifications

Cord length: 1,8 m

Wattage: 650 W

Features

Hanging loop

Attachments

Nozzle

Retractable bristle brush

Shaping brush

Hair type

End result: Straight, Voluminous

Hair length: Long, Medium

Hair thickness: Medium, Thick, Thin

Service

2-year guarantee

