

Philips Norelco Shaver
series 9000 SensoTouch
Shaving unit

Discontinued
Replaced with SH70/72

RQ12/72



RQ12 has been replaced by SH70

Change heads every 12 months for best results

Within one year your shaver heads cut 4.5 million hairs on your face. Replace the shaver heads and get back peak performance

Easy to use

- Reset your shaver after replacing shaving heads
- Easy to replace shaving heads
- Reset your shaver to new

Compatibility

- Replacement shaving unit for SensoTouch 3D shavers

Perfection in every pass

- Our best shaving system on 1-3 day beard
- Heads flex in 8 different directions for a superb result

PHILIPS
NORELCO

Shaving unit
Discontinued Replaced with SH70/72

Highlights

Compatible with SensoTouch 3D



RQ12 shaving unit is compatible with SensoTouch 3D (12__X) and Arcitec (10__X) shavers.

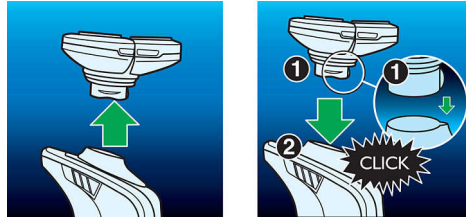
V-Track blade system PRO

Get the perfect close shave. The V-Track Precision PRO Blades gently positions each hair in the best cutting position, from 1 day up to 3 day beard and even the flat laying and different length of hairs. Cuts 30% closer* in less strokes leaving your skin in great condition.

8-direction ContourDetectHeads

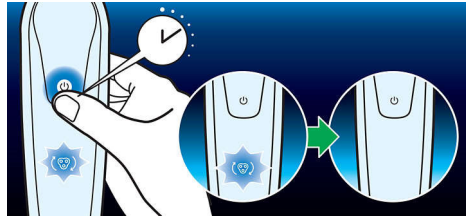
Follow every contour of your face and neck with 8-directional ContourDetect heads. You'll catch 20% more hairs with every pass. Resulting in an extremely close, smooth shave.

Simple replacement



Easily renew your shaving unit using our click off, click on system.

How to reset your shaver



The latest Philips shavers have an inbuilt replacement reminder which will indicate you when to replace shaving heads. After replacing shaving heads, you can reset replacement trigger by pressing the on/off button for more than 5 seconds. Otherwise, replacement trigger will turn off automatically after 9 successive shaves.

Reset your shaver to new



To get back to 100% performance, replace your shaving heads every 12 months.

RQ12/72

Specifications

Shaving heads

- Fits product type: SensoTouch 3D (RQ12xx), Arcitec (RQ10xx)
- Upgraded shaving heads: RQ12 has been replaced by SH70
- Important: If SH70 is also out of stock, unfortunately, there is no replacement available. SH71 is not compatible with SensoTouch (RQ12xx) or Arcitec shavers (RQ10xx).

Accessories

- Included in pack: Retaining ring holder, Protective cap



Issue date 2022-08-24

Version: 10.10.1

EAN: 00 07502 00616 52

© 2022 Koninklijke Philips N.V.
All Rights reserved.

Specifications are subject to change without notice.
Trademarks are the property of Koninklijke Philips N.V.
or their respective owners.

www.philips.com

* Versus its Philips predecessor