

# PHILIPS

## Multi-Styler

## StyleCare

15+ styles in a box

15 attachments & accessories

Style Guide

OneClick Technology

BHH822/00



## More styles on demand

15 attachments and style guide for various looks

Every day a different look! From to perfectly polished, straight, volumized, curly hair to updos and more, create more than 15 styles with the new Philips Multi-Styler with style guide.

### Ease of use

- Fast heat up time, ready to use in 45 sec
- Auto shut-off for safe usage
- 1.8 m power cord
- Swivel cord to prevent tangled wires
- OneClick Technology for quick and easy attachment changing
- 160°C to 210°C styling temperature settings
- LED indicator for styling with optimal temperature

### Beautifully styled hair

- 25mm curling barrel for tight to loose curls
- 80mm straightener for sleek results
- Style guide and 11 useful hair accessories for 15+ styles
- 32mm hot brush for luxurious volume

### Care for your hair

- Protective ceramic coating

# Highlights

## Straightener for sleek results



80mm straightening plates for perfect sleek results.

## Curler for fabulous curls



25mm curling barrel for perfect tight to loose curls.

## Hot brush for luxurious volume



Simply brush your hair for creating perfectly volumptious results.

## 11 versatile hair accessories



Including a style guide and all accessories you need to create 15+ styles! The style kit includes 2 elastic bands, 4 elastic mini scrunchies, a hair

clip and 4 bobby pins, a comb and 2 spiral grips for easy hairstyling. A hair loop, pull hair pin, hair grip, banana clip and a side comb will enable you to experiment and create fabulous styles!

## OneClick release technology



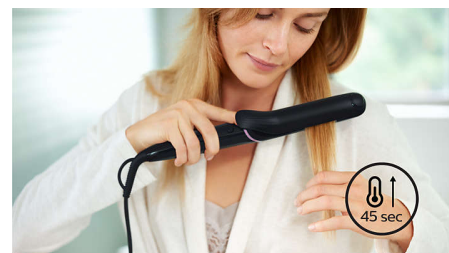
Changing attachments has never been quicker or easier with the multi-styler's OneClick design. Simply click on and push the button, holding the cool tip, to release.

## 2 temperature settings



2 temperature settings for perfect results. Choose from a professional high temperatures for straightening to achieve long lasting results while caring for your hair.

## Fast heat up time



This styler has a fast heat up time, being ready to use in 45 seconds.

## Ready to style indicator



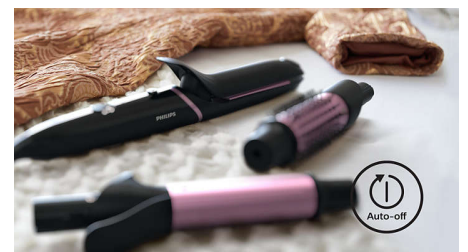
The ready to use indicator shows when the styler has reached the right temperature. The soft, white LED light changes from a soft pulse to constant to easily show when it's ready for use.

## Gentle on your hair



Protective ceramic coating ensures even heat distribution and less hair damage for shiny and soft hair.

## Auto shut-off



This styler has been equipped with an automatic shut-off feature. This feature has been designed to provide peace of mind. If left on, the appliance will automatically switch off after 60 min.

# Specifications

## Technical specifications

Heat-up time: 45 sec

Voltage: 110-240V

Plate size: Curler 90 mm, Heated brush 90 mm

Heater type: PTC

Heat settings: 2

Cable length: 1.8 m

Styling temperature: 180°C - 210°C

## Accessories

Comb

Hair clips

Elastic band: 2

Hair loop

Style guide: with 15 easy to create styles

Banana clip

Elastic mini scrunchy: 4

Hair grip

Hair pins: 4

Pull hair pin

Side comb

Spiral grip: 2

## Features

Cool tip

Swivel cord

Barrel diameter: Curler 25 mm

Coating of heated parts: Ceramic

Storage hook

OneClick release technology

Barrel diameter: Heated brush 32mm

Straightener size: 30x80 mm

## Attachments

Curler

Straightener

Hot brush

## Service

2-year worldwide guarantee

