



Philips 3000 Series  
Hair Styling Set

**1600W**

ThermoProtect attachment  
Keratin-infused plates

## Styling made easy

The uniquely-designed ThermoProtect attachment powerfully mixes warm and cool air for everyday care.

### Easy to use

- Foldable handle for easy storage
- 3 heat and speed settings
- Fast heat up time, ready to use in 60 seconds
- Cool Tip to easily create curls and waves
- A useful swivel cord rotates and prevents tangled wires
- Slim nozzle for touch-ups and detailed styling

### Beautifully styled hair

- Keratin infusion for better care
- 210°C professional temperature for perfect salon results

### Care and protect

- ThermoProtect attachment

### Powerful drying

- 1600W of drying power
- Cool air setting to finish your style

BHP398/00

**PHILIPS**

# Highlights

## 1600W of drying power



This 1600W hair dryer creates the optimum level of airflow, for beautiful results every day.

## ThermoProtect attachment

The uniquely-designed ThermoProtect attachment powerfully mixes warm and cool air for everyday care. It drops the temperature by 15°C while still drying your hair quickly.

## Foldable handle



The compact design with foldable handle makes it easy to pack, store and take the hair dryer with you anywhere you go.

## 3 heat and speed settings



This hairdryer offers 3 preselected heat/speed combinations, making it quick and easy to achieve the perfect style.

## Cool air setting



The cool air setting provides a burst of cold air to finish and hold your style.

## 14 mm styling nozzle

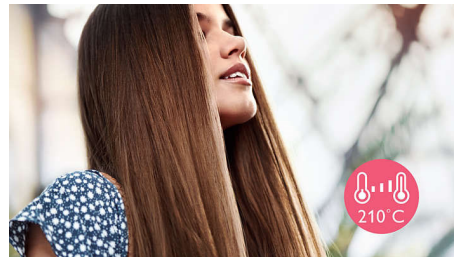
The slim nozzle precisely focuses the air, for quick touch-ups and perfecting small details of your style.

## Keratin infusion



Keratin is the hair's essential ingredient which makes them strong, healthy and gorgeous looking. The ceramic is enriched with keratin to even better take care of your hair.

## 210°C styling temperature



This styling temperature enables you change the shape of your hair, and gives you that perfect look like you've just come from the salon.

## Rapid heat-up



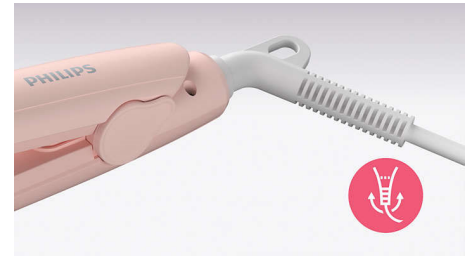
The straightener has a fast heat-up time, being ready to use in 60 seconds.

## Cool Tip



The tip of the styler is made from a special heat insulating material to keep it cool. You can safely hold it while you're curling to create beautiful curls, waves and bouncy styles.

## Swivel cord



The swivel cord technology conveniently rotates the cord and prevents unnecessary tangles.

# Specifications

## Attachments

- Nozzle: 14 mm
- ThermoProtect attachment

## Service

- 2-year worldwide warranty

## Caring technologies

- ThermoProtect

## Hair Dryer

- Foldable handle
- Hanging loop
- Cord length: 1.8 m

- Settings: Cool air setting
- Heat/speed settings: 3
- Wattage: 1600 W
- Motor: DC
- Voltage: 220-240 V

## Straightener

- Material plates: Keratin-infused ceramic plates
- Cord length: 1.6 m
- Swivel cord
- Heat-up time: 60 s
- Wattage: 31-33 W
- Plate size: 19x85 mm
- Voltage: 110-240 V



Issue date 2022-06-16

Version: 1.1.1

© 2022 Koninklijke Philips N.V.  
All Rights reserved.

Specifications are subject to change without notice.  
Trademarks are the property of Koninklijke Philips N.V.  
or their respective owners.

[www.philips.com](http://www.philips.com)