



Philips SalonDry Control  
Hairdryer

2100W

HP4983/03

## The dryer that gives the results you want

### SalonDry Control

Take control of your blow dry with the SalonDry Control. 2100W of professional drying power, Ionic conditioning and multiple settings means great results – from dry to set to style.

#### **Beautifully styled hair**

- Volume diffuser enhances volume, for curls and bouncy styles
- Professional 2100W for perfect salon results

# PHILIPS

Hairdryer  
2100W

# Specifications

## Technical specifications

- Voltage: 220-240 V
- Cord length: 2,0 m
- Power: 2100 W
- Material housing styler: ABS

## Weight and dimensions

- F-box dimensions: 310x120x240 mm
- A-box dimensions: 630x375x261 mm
- F-box weight (including product): 1010 g
- Weight of net product incl. attachments: 657 g
- Number of F-boxes in A-box: 6
- A-box weight: 6980 g

## Pallet

- Quantity: 1200x800
- Number of layers: 7
- Number of A-boxes per layer: 3

## Serviceability

- Replacement

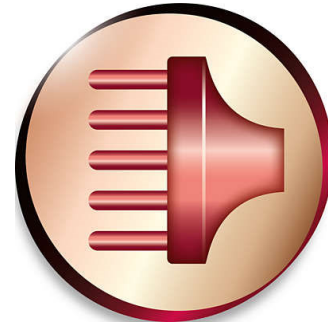
## Logistic data

- 12NC code: 88449830001
- EAN F-box: See pacdoc for your country
- Country of origin: PRC
- EAN A-box: See pacdoc for your country

HP4983/03

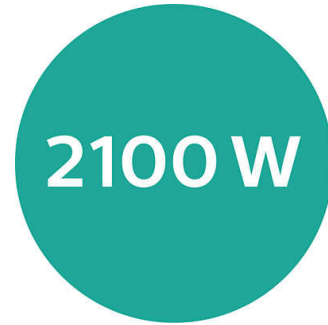
# Highlights

## Volume diffuser



The volume diffuser dries hair healthily, reduces frizz and increases volume by spreading the airflow across the hair. It adds lift and maximises volume, especially when used on the crown and root area, making it perfect for creating curls and bouncy styles

## Professional 2100W



This 2100W professional hairdryer creates a powerful airflow. The resulting combination of power and speed makes drying and styling your hair quicker and easier.



Issue date 2022-06-16

Version: 1.0.1

© 2022 Koninklijke Philips N.V.  
All Rights reserved.

Specifications are subject to change without notice.  
Trademarks are the property of Koninklijke Philips N.V.  
or their respective owners.

[www.philips.com](http://www.philips.com)