

PHILIPS

Hairdryer

SalonDry Control

2000W

HP4981/03



The dryer that gives the results you want

SalonDry Control

Take control of your blow dry with the SalonDry Control. 2000W of professional drying power and multiple settings means great results – from dry to set to style.

Easy to use

- Hanging loop for easy storage
- Inlet grille can be opened for easy cleaning
- 1.8 m power cord
- 6 heat/speed settings for full flexibility

Beautifully styled hair

- Narrow concentrator for precise styling
- Powerful 2000 Watt dryer
- Volume diffuser enhances volume, for curls and bouncy styles

Long lasting styles

- Cool shot sets your styles

Time saving

- Turbo boost for extra fast drying

Highlights

Hanging loop

The SalonDry Control can be easily stored by hanging it from its hanging loop.

Cool shot



The cool shot fixes your hairstyle and adds shine to it.

Narrow concentrator



The narrow concentrator directs the airflow directly at the brush or comb for precise styling.

Turbo boost



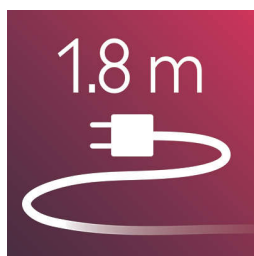
The turbo boost button increases the airflow, to dry your hair even quicker.

Removable inlet grille



The air inlet grille can be opened for easy cleaning.

1.8 m cord



1.8 m power cord

2000 Watt dryer

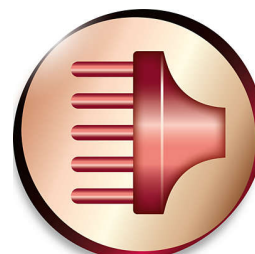
The combination of heat and superior airflow brings you the quickest way to dry your hair.

6 heat/speed settings



3 heat/2 speed settings give 6 possible settings to dry and pre-style your hair the way you like it.

Volume diffuser



The volume diffuser dries hair healthily, reduces frizz and increases volume by spreading the airflow across the hair. It adds lift and maximises volume, especially when used on the crown and root area, making it perfect for creating curls and bouncy styles

Specifications

Technical specifications

Voltage: 220-240 V

Cord length: 1,8 m

Power: 2000 W

Material housing styler: ABS

Weight and dimensions

F-box dimensions: 310x120x240 mm

A-box dimensions: 630x375x261 mm

F-box weight (including product): 1090 g

Weight of net product incl. attachments:

703 g

Number of F-boxes in A-box: 6

A-box weight: 7460 g

Pallet

Number of layers: 7

Number of A-boxes per layer: 3

Pallet quantity: 1200x800 pcs

Serviceability

Replacement

Logistic data

12NC code: 88449810001

EAN F-box: See pacdoc for your country

Country of origin: PRC

EAN A-box: See pacdoc for your country

