

Philips Shaver series 7000
Shaving heads

GentlePrecisionPRO Blades
Fits S7000 (S7xxx)
Fits Star Wars Shaver SW77xx

SH70/61



Reset your shaver to new

Change heads every 2 years for best results

Within two years your shaver heads cut 9 million hairs on your face. Replace the shaver heads and get back to 100% performance. Compatible with the Series 7000 Shaver.

Easy to use

- Reset your shaver after replacing shaving heads
- Easy to replace shaving heads
- Replace your shaving heads in just two steps
- Reset your shaver to new

Compatibility

- Replacement heads for Shaver series 7000

A close and smooth shave

- Blades protect skin and cut close even with 3-day stubble

PHILIPS

Highlights

Compatible with Series 7000



SH70 replacement heads are compatible with Shaver series 7000 (S7xxx) and Star Wars shaver SW7700.

GentlePrecision PRO blades



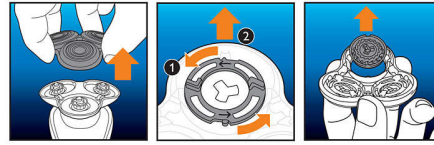
Our updated cutting system has skin protection technology, designed to only cut hair not skin. V shaped blades guide the skin away from the blades for a close smooth shave - even on 3-day stubble.

Replacement reminder



The latest Philips shavers have an inbuilt replacement reminder in the form of a shaving unit symbol. This symbol will light up and indicate you when to replace shaving heads.

Simple replacement



1. Open the shaver by pressing the "release" button;
2. Remove the retainer by turning the lock counterclockwise;
3. Take out the old shaving heads and carefully insert replacements; check that the heads align exactly in the setting;
4. Replace the retainer and secure it by turning the lock clockwise;
5. When you close the shaving head properly, you will hear it click into place.

How to reset your shaver



After replacing shaving heads, you can reset the replacement reminder by pressing the on/off button for more than 7 seconds. Otherwise, replacement trigger will turn off automatically after 9 successive shaves.

Reset your shaver to new



To get back to 100% performance, replace your shaving heads every 2 years.

Specifications

Shaving heads

- Shaving heads per packaging: 3
- Fits product type: Shaver series 7000 (S7xxx)

Cleaning

- Usage: Use cleaning spray HQ110



Issue date 2023-03-18

Version: 8.1.1

EAN: 87 10103 83392 5

© 2023 Koninklijke Philips N.V.
All Rights reserved.

Specifications are subject to change without notice.
Trademarks are the property of Koninklijke Philips N.V.
or their respective owners.

www.philips.com