

PHILIPS

Electric shaver

RQ320/16



70% of men agree. Great in hard to reach areas.

The new Philips RQ300 series shaver brings all the latest features such as ultimate contour following, designed for precision and comfort shaving system. You will feel confident about the shaving result, as well as the product you own.

Adjusts seamlessly to every curve

- adjust to the curve of your face

Ultimate smooth shave that is gentle on the skin

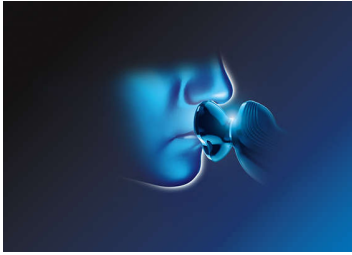
- for an ultimate smooth shave that is gentle on the skin

Easily shave even the most difficult areas

- Easily shave even the most difficult to reach areas
- complete control and extra precision

Highlights

Designed for precision



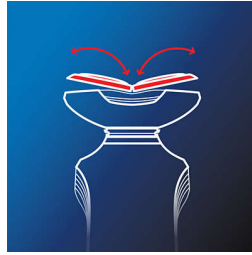
The slim design of the shaver allows you to easily shave even the most difficult to reach areas of your face.

Comfort shaving system



The imported shaving heads give you an ultimate smooth shave that is gentle on the skin.

Reflex Action System



Automatically adjusts to every curve of your face and neck.

Anti slip grip



Unique ergonomic grip ensuring complete control and extra precision.

Specifications

Accessories

Maintenance: Cleaning brush, Protective cap

Power

Automatic voltage: 100-240 V

Battery Type: NiMH

Max power consumption: 2 W

Design

Finishing: Mirror black, Front Shell (translucent), High gloss chrome ring

Color: Mystery black

Handle: Anti slip grip

Service

Replacement head: Replace every 2 yrs with RQ32

2-year guarantee

Shaving Performance

Contour following: Reflex Action system

Shaving system: ComfortCut shaving system

Ease of use

Charging: Charge 10 hours for 20 min use, Power plug / cord, Rechargeable

Cleaning: Fully washable shaver

Shaving time: Up to 20 minutes

Display (At Powerplug): 1 LED indication, Charging indication

Charging time: 10 hours

