

PHILIPS

Replacement
shaving heads

SH30

PowerCut blades

Fits S1000, S2000, S3000 series

Fits S5000 series rounded shape

SH30/51



Reset your shaver to new

Replace every 24 months for a shaver like new

Within two years your shaver heads cut 9 million hairs on your face. Replace the shaver heads and get back to 100% performance. Compatible with the Series 5000X, Series 3000 and Series 1000 Shaver.

Easy to use

- Easy to replace shaving heads
- Change heads every 24 months for the best performance

Compatibility

- For shavers series 1000, 2000, 3000 and 5000 rounded shape

Performance

- Consistent and clean shave

Sustainability

- Recyclable packaging*

Highlights

PowerCut Blades



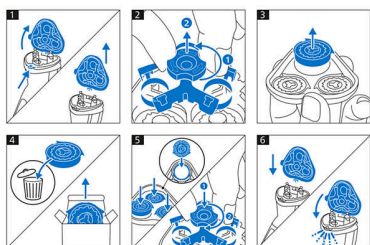
27 self-sharpening blades consistently cut each hair right above skin level for a smooth, even finish every time. Our self-sharpening blades stay like new for 2 years.

Compatibility



Check the back of your shaver's handle to confirm replacement head. Need help? Visit philips.com/accessories

Simple replacement



1. Open the shaver by pressing the "release" button; 2. Remove the retainer by turning the lock counterclockwise; 3. Take out the old

shaving heads and carefully insert replacements; check that the heads align exactly in the setting; 4. Replace the retainer and secure it by turning the lock clockwise; 5. When you close the shaving head properly, you will hear it click into place.

Reset your shaver to new



Replace the shaver heads every 24 months to ensure best performance or your device.

Recyclable packaging*



At Philips we strive for sustainability in all aspects of product development. This packaging comes without plastic parts and is fully recyclable*.

Specifications

Shaving heads

Fits product type: Shaver series S1000, Shaver series S2000, Shaver series S3000, Shaver series S5000 rounded shape

Shaving heads per packaging: 3

