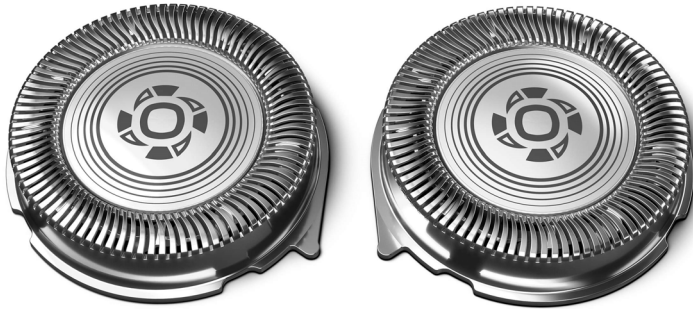


Philips Click & Style
Shaving heads

ComfortCut blades

Fits S500 (S5xx)
Fits Star Wars Shaver XZ58x

SH30/21



Reset your shaver to new

Change heads every 2 years for best results

Within two years your shaver heads cut 9 million hairs on your face. Replace the shaver heads and get back to 100% performance. Compatible with the Series 500 Shaver.

Easy to use

- Easy click off, click on
- Reset your shaver to new

Compatibility

- Replacement heads for our 2 heads shavers

PHILIPS

Shaving heads
ComfortCut blades Fits S500 (S5xx), Fits Star Wars Shaver XZ58x

Specifications

Shaving heads

- Fits product type: Shaver series 500 (S5xx)
- Shaving heads per packaging: 2

Cleaning

- Usage: Use cleaning spray HQ110

SH30/21

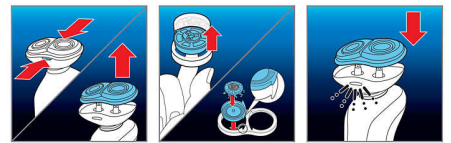
Highlights

Compatible with 2 heads shaver



SH30 (2 pack) replacement heads are compatible with Shaver series 500 (S5xx), series 300 (S3xx), series 100 (S1xx) and Star Wars shaver XZ580.

Simple replacement



1. Press the release buttons on the shaving unit and pull the shaving head holder off the shaving unit.
2. Turn the retaining rings anti-clockwise and lift them out.
3. Take out the old shaving heads and carefully insert replacements; make sure the projections of the shaving heads fit exactly into the recesses.
4. Place the retaining rings back onto the shaving head holder and turn them clockwise.
5. Reattach the shaving head holder to the shaving unit ('click').

Reset your shaver to new



To get back to 100% performance, replace your shaving heads every 2 years.



Issue date 2024-02-18

Version: 13.3.1

EAN: 87 10103 71661 7

© 2024 Koninklijke Philips N.V.
All Rights reserved.

Specifications are subject to change without notice.
Trademarks are the property of Koninklijke Philips N.V.
or their respective owners.

www.philips.com