

PHILIPS

Dryer

Shine & Protect



HP8210/03



Extra Shine, Ultimate Protect*

The Shine and Protect hair dryer

Get the style you want whilst caring for your hair. The Shine and Protect hair dryer offers 1600W of professional drying power

Easy to use

- Three flexible settings for more control

Beautifully styled hair

- 1600W for gentle drying

Less Hair Damage

- Less overheating with Even Heat Distribution technology
- Cool air setting for gentle drying
- Ionic Care
- ThermoProtect

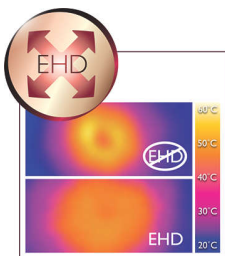
Highlights

Shine Ionic Care



Efficient anti-static, Ion conditioning for shiny, frizz free hair.

Advanced EHD technology

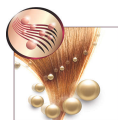


Advanced Philips EHD technology means that your dryer uses an uniquely designed air outlet to ensure heat is always distributed very evenly - even at high temperatures - and prevents damaging hot spots. This gives ultimate protection to the hair from overheating and thus helps to keep your hair healthy and shiny.

1600W for gentle drying



This 1600W hairdryer creates the optimum level of airflow and gentle drying power, for beautiful results every day.



Cool air setting



A cold air setting is a low heat setting that gently dries the hair to minimize damage. This function is suitable for all hair types, but especially for fine, dry or damaged hair. It's a perfect setting for the hot summer season!

Three flexible settings



The speed and heat required can be easily adjusted to create the perfect end result. Three flexible settings ensure precise and tailored styling.

ThermoProtect



As built-in protection for your hair, ThermoProtect retains a constant caring temperature. This allows you to quickly dry your hair without over-drying, maintaining your hair's natural moisture level for shiny, healthy looking hair.

Specifications

Accessories

Attachments: Nozzle

Technical specifications

Cord length: 1.6 m

Voltage: 220 V

Wattage: 1600 W

Design

Color: Rose Pink

Features

Hanging loop

Settings: 3 heat/speed settings

Coolshot

Service

2-year guarantee

