

PHILIPS

NORELCO



Wet and dry electric
shaver

Shaver 9500

Pressure Guard sensor

Dual SteelPrecision blades

ComfortGlide Rings

360° Contour heads



S9985/84

Superior closeness*, personalised skin comfort with SenseIQ Technology

Philips Shaver 9500 delivers a smooth shave while reducing skin irritation. Only Philips has ComfortGlide rings, a special anti-friction coating to protect your face from redness and irritation.

A close shave

- Helps you to shave with optimal pressure
- Maintains skin contact for a comfortable, smooth shave
- ComfortGlide rings protect your face from irritation

For a convenient shave

- OLED display for dynamic SkinIQ and shaver notifications
- Even up your moustache and sideburns
- Get a convenient dry shave or a refreshing wet shave
- Keep your shaver like new with a deep clean in just 1 minute
- 60 minutes of cordless shaving from a 1 hour charge

SenseIQ technology

- Guides you to an improved technique with fewer passes
- Master your technique with the Philips GroomTribe app
- Advanced precision for a close shave*
- Adjusts to your beard for effortless shaving

Shaver 9500

Wet and dry electric shaver

S9985/84

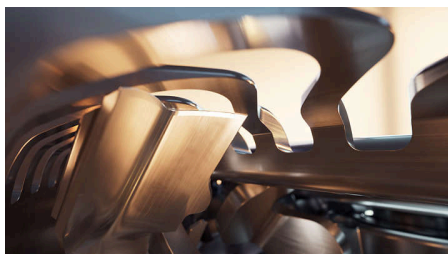
Highlights

Pressure Guard sensor



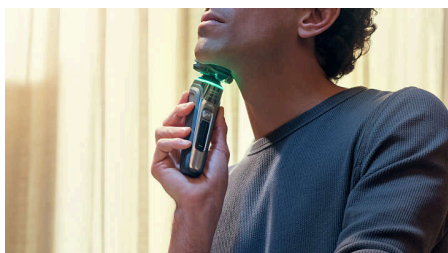
Using the right pressure is key for closeness and skin protection. Advanced sensors in the shaver read the pressure you apply, and the innovative light signal shows when you are pressing too hard or too little. For a personalised shave that is just right for you.

Dual SteelPrecision blades



With up to 150.000 cutting actions per minute, the Dual SteelPrecision blades shave close. The 72 high-performance blades are self-sharpening and made in Europe.

Smart Hair sensor



The intelligent sensor reads facial hair density 500 times per second and auto-adapts cutting power for an effortless and gentle shave.

Motion Control sensor

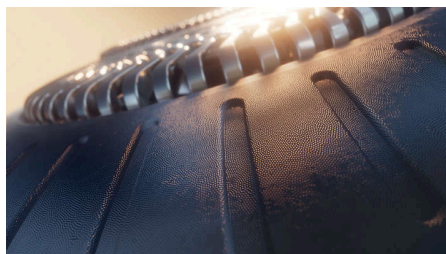


Motion-sensing technology tracks how you shave and guides you to the optimal movements. After just three shaves, the majority of men achieved a better shaving technique for fewer passes**.

Personalisation via app

Pair your Philips electric shaver to the GroomTribe app and prepare to master your technique. Just track your progress and personalise your routine to achieve a shave that's both close and kind.

ComfortGlide rings



Shaving heads are surrounded with ComfortGlide rings, a special protective coating with skin gliding properties, to shield your face from irritation***.

360° contour heads



Fully flexible heads turn 360° to follow your facial contours. Experience optimal skin contact for a thorough and skin-friendly shave.

Advanced OLED display



The first Philips shaver with a dynamic OLED display reveals every shaver feature and notification with sharp, fluid animation. The intuitive interface includes SkinIQ guidance, battery status, cleaning advice and more.

Shave wet and dry

Get a convenient dry shave or a more refreshing wet shave with gel or foam - even in the shower.

Shaver 9500

Wet and dry electric shaver

S9985/84

Highlights

Pop-up trimmer



Refine and define your moustache and sideburns with the pop-up trimmer—and complete your look with ease.

Quick Clean Pod



Powerful cleaning pod thoroughly cleans and lubricates your shaver in just 1 minute, keeping it performing at its best for longer. The pod is 10 x more effective than cleaning with water****.

60 minutes of cordless shaving

Use your shaver at home or on the go for up to 60 minutes on a 1-hour charge - that's about 20 shaves. Or a 5-minute quick charge gives enough power for one shave.

Shaver 9500

Wet and dry electric shaver

S9985/84

Specifications

Accessories

Quick Clean Pod: Yes, 1 cartridge included

Integrated pop-up trimmer

Travel and storage: Travel case

Software

App: Connects via Bluetooth®, GroomTribe

Software update: Philips offers relevant software updates for a period of 2 years after the date of purchase

Smartphone compatibility: iPhone and

Android™ devices

Power

Charging: 1 hour full charge, 5-min quick charge

Battery type: Li-Ion

Run time: 60 minutes

Automatic voltage: 100-240 V

Stand-by power: 0.04 W

Max power consumption: 9 W

Design

Handle: Rubber grip

Colour: Dark chrome

Shaving heads: Angular

Service

2 year warranty

Replacement head SH91: Replace every 2 yrs with SH91

Shaving Performance

Shaving system: Dual SteelPrecision blades

Contour following: 360° Contour heads

SenseIQ technology: ComfortGlide rings, Motion Control sensor, Smart Hair sensor

Ease of use

Cleaning: One-touch open, Fully washable

Display: Advanced OLED display, Pressure guidance, Motion control indicator, Battery level indicator, Travel lock

Wet & Dry: Wet and dry use

