

# PHILIPS

beard trimmer

Beardtrimmer series  
3000

1 mm precision settings

Stainless steel blades

10-hr charge/45 mins' cordless  
use



QT4000/13



## The perfect beard made easy

The most convenient way to start with your stubble

Style your beard the way you want with this stubble and beard trimmer. Precision from as short as 1 mm up to 10 mm.

### Easy to use

- Easy to grip
- Simple maintenance
- Warranty for purchase protection
- Up to 45 minutes of cordless use after 10 hours' charging

### Skin-friendly performance

- Skin friendly rounded tips for smooth skin contact
- Get a perfect but protective trim

### Precision

- Easy to select and lock-in length settings, 1-10 mm
- 1 mm precision

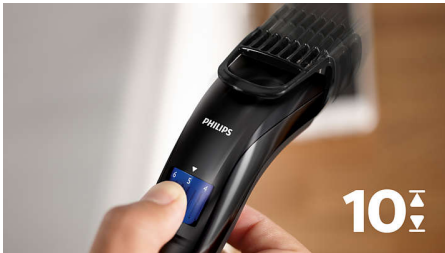
# Highlights

## The perfect beard every day



Set the trimmer at the lowest position for a perfect 3-day beard, just 1 mm long.

## 10 lock-in length settings



Turn the wheel to simply select and lock-in the length settings you want: from a short beard of 1mm up to a full beard of 10mm, in precise 1mm steps.

## Self-sharpening blades



The self-sharpening steel blades on the Philips 3000 beard trimmer stay as sharp and effective as on day 1 to deliver a perfect yet protective trim, time after time.

## Skin-friendly high-performance



Blades stay extra-sharp to always cut hairs neatly and effectively, but have rounded blade tips and combs to prevent irritation.

## Cordless Use



Rechargeable only. Up to 45 minutes of cordless power after 10 hours of charging.

## Ergonomic design



A fast trimmer that's comfortable to hold and use. So you can handle those hard-to-reach areas more easily.

## Easy to clean



Detach the head of your Philips beard trimmer and rinse it under the tap for easy cleaning. Then dry it before you put it back on the appliance.

## Built to last



All of our grooming products are built to last. They come with a 2-year warranty, never need to be oiled and are compatible with any voltage worldwide.

# Specifications

## Create the look you want

**Styles:** Short beard

## Power system

**Battery type:** Ni-MH

**Running time:** Up to 45 minutes

**Worldwide voltage:** 100–240 V

**Charging time:** 10 hours

## Accessories

Cleaning brush

## Design

**Handle:** Easy grip

## Service

2-year worldwide guarantee

## Cutting system

**Cutting element:** Stainless steel blades

**Cutter width:** 32 mm

**Number of length settings:** 10

**Range of length settings:** 1 up to 10 mm

**Precision (size of steps):** by 1 mm

**Non-scratch teeth:** For more comfort

**Comb type:** Stubble

## Ease of use

**Zoom wheel:** Easily adjust length settings

**Secured length settings**

**Battery:** 1 x AAA NiMH

**Charge indication:** On plug

**Easy Cleaning:** Washable attachments

