

# PHILIPS

## Straightener

### Prestige

Personalized technology

Maintains hair strength\*

Up to 70% moisture lock-in\*\*

4x more ions for shiny hair\*\*\*



BHS830/03



## Personalized straightening with SenseIQ

Proven to maintain up to 93% of hair strength\*

Introducing the Philips personalized straightener with SenseIQ technology that is designed to lock your hair's natural moisture deep within. The result? Strong hair and a healthy-looking shine every time you style.

#### Easy to use

- Pull-free gliding
- Easy straightening with 3 styling modes
- Precise styling with cool tip
- Convenient styling with roll-up pouch
- Quick styling

#### Care for your hair

- Cares uniquely for your hair
- Keeping hair strength
- Tetra Ionic System for shiny hair

#### SenseIQ technology

- Adapts straightening performance to prevent overheating
- Personalized straightening
- Senses hair's temperature

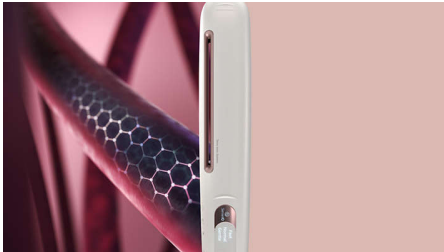
# Highlights

## Personalized



SenseIQ technology for a personalized straightening experience. Senses. The active digital sensor measures your hair's temperature more than 20,000 times per styling session. Adapts. The intelligent microprocessor automatically adjusts the temperature to prevent your hair from overheating. Cares. Our sensing and adapting technology protects the hair while styling, locking-in up to 70% of its natural moisture\*\*.

## Strength



Proven to maintain up to 93% of your hair's essential strength\*, the straightener with SenseIQ makes sure your hair always feels healthy on the inside while looking sleek and lustrous outside.

## Tetra Ionic System



Let your hair feel the enriching ionic ambience with the Tetra Ionic System. The patented design releases millions of ions using 4 special jets nested on both sides of the straightener. The enriching molecules remove static, eliminate frizz, and gives your hair lustrous glossy shine.

## Sensing



Unique hair needs unique care. So stroke after stroke, Philips Straightener Prestige personalizes to you. Its active digital sensor measures the temperature of your hair more than 20,000 times per styling session to give you a tailor-made experience every time you style.

## Adapting



The intelligent microprocessor is the brain behind SenseIQ. It constantly analyzes and adjusts the temperature. Adapting its heat to your hair, the straightener prevents overheating, while always providing the styling performance you expect.

## Caring



Give your hair the exclusive care it deserves. The straightener with SenseIQ technology locks in up to 70%\*\* of your hair's natural moisture to ensure sleek, healthy-looking hair full of shine.

## Pull-free gliding



Float across the surface of your hair without any pulling thanks to ultra-smooth plates that received a special anti-friction treatment.

## Easy straightening



At the touch of a button, select one of three modes based on your hair-type: Fast mode. Heats to 210°C for hard-to-straighten hair, including thick, course or curly. Normal mode. Heats to 190°C for use on textured or softly waved hair. Gentle mode. Heats to 170°C for use with fine, pale, blonde or color-treated hair. For hair protection, SenseIQ is automatically activated in all modes.

## Precise styling



Want to make waves? No problem. Place a strand of hair between the plates and turn the straightener inwards or outwards as you glide. Grip the cool tip with your free hand for extra control and precision.

# Specifications

## Accessories

Pouch: Heat-resistant roll-out pouch  
Heat protection cap

## Technical specifications

Cord length: 2 m  
Voltage: 110–240 V  
Heat-up time: 15 sec  
Styling temperature: 120°C – 230°C

## Features

Auto shut-off: after 60 min  
Swivel cord  
Storage hook  
Settings: 3 modes: Fast, Normal, Gentle  
LED display

## Service

2-year worldwide warranty

## Caring technologies

Ionic Care: Yes, 4 ionic jets  
SenseIQ technology

