

PHILIPS

MoistureProtect
Hairdryer

DryCare Prestige

MoistureProtect technology

2300W drying power

Ionic care for shiny hair

HP8281



Beautiful hair protected inside and out

Boosts shine and preserves hair's natural moisture

The MoistureProtect Hairdryer has an infrared sensor which continually measures the optimal temperature to dry your hair, preserving its natural moisture.

Beautifully styled hair

- Ionic care for smooth, frizz-free, shiny hair

Ease of use

- 2300W of fast, high performance drying power
- Cool shot to set your style
- Six speed and heat settings for optimal control

Caring technology

- ThermoProtect prevents your hair from overheating

MoistureProtect technology

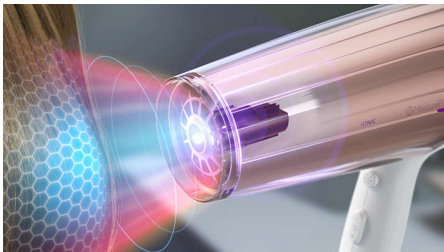
- MoistureProtect technology preserves hair's natural moisture
- Intelligent MoistureProtect sensor

Highlights

MoistureProtect technology

MoistureProtect technology controls and adapts the temperature to boost shine and to preserve your hair's natural moisture. Protects your hair from overheating by always ensuring the optimal temperature. Enjoy beautiful hair protected inside and out.

MoistureProtect sensor



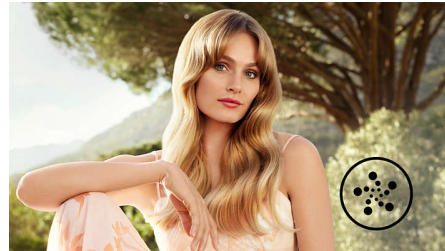
The infrared MoistureProtect sensor continually monitors and adapts the drying temperature to match the needs of your hair. The intelligent sensor measures your hair's temperature while you dry your hair, to prevent moisture loss and cuticle damage. Keeping the moisture in your hair means it will be softer, shinier and healthier. You can switch the sensor on/off depending on your needs.

2300W drying power



This 2300W professional hairdryer has six speeds and heat settings. The resulting combination of power, speed and technology makes drying and styling your hair quicker, easier and gentler.

Ionic care



Charged negative ions eliminate static, condition the hair and smooth down the hair cuticles to intensify the hair's shine and glossiness. The result is hair that is smooth, shiny and frizz-free.

ThermoProtect temperature



ThermoProtect temperature ensures the perfect drying temperature for your hair. A powerful but gentle drying experience providing optimal results in a caring way.

Six speed and heat settings



Six speed and heat settings put you in control. Soft airflow with high heat allows you to create beautiful curls with the diffuser. Enjoy perfectly smooth hair faster by using strong airflow and high heat.

Cool shot



The cool shot button provides an intense burst of cool air. It is used after styling to finish and set the style. Cool air gives longer-lasting results, keeping your style exactly in place.

Specifications

Accessories

Attachments: Nozzle, Diffuser

Technical specifications

Cord length: 2.5 m

Frequency: ~50-60 Hz

Voltage: 220-240 V

Wattage: 2100-2300 W

Motor: DC

Design

Color: Pearl white & rose gold

Features

Heat/Speed settings: 6

Cool Shot

Service

2-year worldwide guarantee

Caring technologies

Ionic Care

MoistureProtect technology

