

PHILIPS

Dryer

Shine & Protect

HP8213/03



Extra Shine, Ultimate Protect

Get the style you want whilst caring for your hair. The Shine and Protect hair dryer offers 1600W of professional drying power.

Easy to use

- Six flexible speed and temperature settings for full control

Beautifully styled hair

- 1600W for gentle drying
- 2 times Ionic Care

Less Hair Damage

- Less overheating with Even Heat Distribution technology
- ThermoProtect

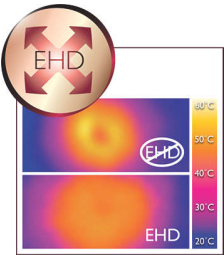
Highlights

2 times Shine Ionic Care



Instantly release 2X ions**, effectively anty-static, Ion conditioning for shiny, frizz free hair.

Advanced EHD technology

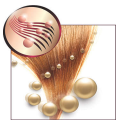


Advanced Philips EHD technology means that your dryer uses an uniquely designed air outlet to ensure heat is always distributed very evenly - even at high temperatures - and prevents damaging hot spots. This gives ultimate protection to the hair from overheating and thus helps to keep your hair healthy and shiny.

ThermoProtect



As built-in protection for your hair, ThermoProtect retains a constant caring temperature. This allows you to quickly dry



your hair without over-drying, maintaining your hair's natural moisture level for shiny, healthy looking hair.

1600W for gentle drying



This 1600W hairdryer creates the optimum level of airflow and gentle drying power, for beautiful results every day.

6 flexible speed/temp settings



The speed and heat required can be easily adjusted to create the perfect style. Six different settings ensure full control for precise and tailored styling.

Specifications

Accessories

Attachments: Nozzle

Technical specifications

Cord length: 1.6 m

Voltage: 220 V

Wattage: 1600 W

Design

Color: Metallic Purple

Features

Hanging loop

Settings: 6 heat/speed settings

Service

2-year guarantee

