

PHILIPS

Hairdryer

SalonShine Care

HP8202/00



Ion conditioning for frizz-free hair

SalonShine Care ION

Get the style you want whilst looking after your hair. The SalonDry Pro offers 1600W of professional drying power.

Easy to use

- Compact design for easy handling
- 1.8 m cord for maximum flexibility
- Easy storage hook for convenient storage
- Foldable handle for easy portability

Beautifully styled hair

- Six flexible speed and temperature settings for full control
- Ion conditioning for shiny, frizz free hair
- 1600W for gentle drying
- Concentrator for precise styling
- Specially designed for Asians
- Coolshot for seal in shine and fix your style

Less Hair Damage

- EHD+ technology for more protection and shinier results
- Thermoprotect for a constant caring temperature of 57°C

Highlights

Specially designed for Asians



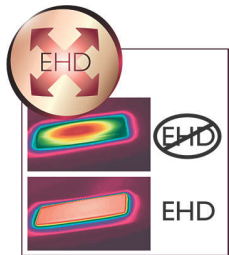
Specially designed for Asians

1600W for gentle drying



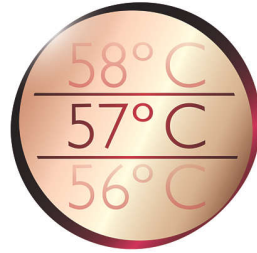
This 1600W hairdryer creates the optimum level of airflow and gentle drying power, for beautiful results every day.

EHD+ technology



Advanced Philips EHD+ technology means that your dryer will always distribute the heat very evenly - even at high temperatures, and prevents damaging hot spots. This gives added protection and thus helps to keep your hair healthy and shiny.

Thermoprotect 57 C



Built in protection for hair, Thermoprotect retains a constant caring temperature of 57°C. This allows you to quickly dry your hair without overdrying, maintaining your hair's natural moisture level, for shiny healthy looking hair.

Six flexible speed settings



The speed and heat required can be easily adjusted to create the perfect style. Six different settings ensure full control for precise and tailored styling.

Foldable handle



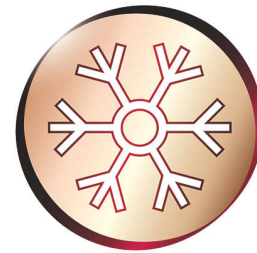
This hairdryer benefits from a foldable handle. The result is a small, compact hair dryer that will easily pack into the smallest spaces and you can take virtually anywhere.

Ion conditioning



Ion conditioning for shiny, frizz free hair

Coolshot



Coolshot for seal in shine and fix your style

Compact design



Compact and ergonomic, this hairdryer benefits from a clever modern design. This results in a dryer that is light and easy to handle yet small enough to store virtually anywhere.

Easy storage hook



The rubberised hook is located at the base of the handle and provides another storage option, particularly convenient for use in the home or when staying at a hotel.

Specifications

Technical specifications

Cord length: 1,8 m

Wattage: 1600 W

Features

Foldable handle

Cool shot

Hanging loop

Service

2-year guarantee

