

PHILIPS

Wet and dry electric shaver

Shaver series 3000

DualPrecision blades

Flexing heads

AT890



Great skin protection, smooth shave

wet shave with shaving gel or foam

Enjoy a refreshing shave without worrying about damaging your skin with this wet & dry shaver. The Aquatec seal ensures a comfortable dry shave and a refreshing wet shave. Use it wet with shaving gel or foam for enhanced skin comfort.

Ease of use

- 50 shaving minutes, 1 hour charge
- Washable shaver with QuickRinse system
- 3 minute quick charge for one shave
- Perfect for trimming your sideburns and moustache

Also use wet for enhanced skin comfort

- Aquatec: refreshing wet shave with foam or an easy dry shave

Shave smooth

- DualPrecision effectively shaves long hairs & short stubble
- Super Lift&Cut blades raise hairs to cut closer

Protect your skin

- Glides smoothly over the curves of your face

Highlights

Aquatec wet & dry



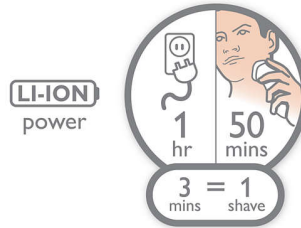
The Aquatec seal on the shaver makes it 100% waterproof. Use it in the shower with your favourite shaving gel or foam for extra skin protection. Naturally, you can also shave dry for convenience. When you are done, simply pop the heads open and rinse under the tap to easily clean your shaver.

Dual Precision Blades



DualPrecision blades comfortably shave both long hairs and short stubble. 1. Slots cut long hairs. 2. Holes cut stubble

50+ Shaving Minutes



An energy-efficient, powerful lithium-ion battery gives you more shaves per charge. Charge it for an hour, and you'll have up to 50 minutes of shaving time - that's around 17 shaves. Charge it for 3 minutes and you'll have enough power for one shave.

Fully waterproof



With QuickRinse system to clean under the tap and can be used under the shower.

Skin protection system



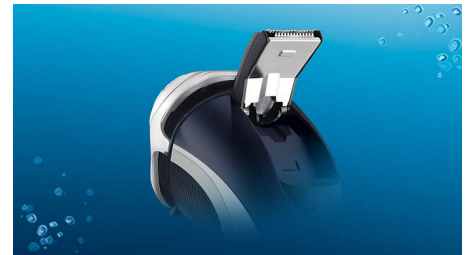
Rounded low-friction protection heads adjust to the curves of your face to limit skin damage.

Super Lift&Cut Action



The first blade raises each hair while the second blade comfortably cuts below skin level, for really smooth results.

Pop up trimmer



Complete your look by using the pop up trimmer. Perfect for maintaining a moustache and trimming sideburns.

Quick charge for 1 shave



3 minute quick charge provides enough power for one shave, so that you are always fast even when the battery is empty

Specifications

Power

Automatic voltage: 100-240 V

Battery Type: Lithium-ion

Stand-by power: < 0.25 W

Maximum power consumption: 5.4 W

Design

Color: NA

Finishing: NA

Handle: Easy grip

Ease of use

Cleaning: Fully waterproof, QuickRinse hair chamber

Wet & Dry

Display: 1 LED indication, Battery full indication, Battery low indication, Charging indication, Quick charge indication

Shaving time: 50+ minutes, up to 17 shaves

Operation: Rechargeable battery, Cordless use

Charging time: 1 hour, 3 min quick charge for 1 shave

Display indicates: Battery low, Charging, Battery full, Replace shaving heads

Accessories

Maintenance: Cleaning brush, Protective cap

Shaving Performance

Shaving system: DualPrecision heads, Super Lift&Cut

Contour following: Dynamic Contour Response

Styling: Integrated pop up trimmer

Service

Replacement head: HQ8 has been replaced by SH50

Replacement heads: Replace every 2 yrs with HQ8

Consumer Trade Item

Height: 24.5

Width: 17.3

Length: 8.8

Net Weight: .337

Gross Weight: .572

GTIN: 08710103703839

Country of origin: NL

Harmonized system code: 851010

Outer Carton

Height: 26

Width: 18.6

Length: 35.6

Gross Weight: 2.538

GTIN: 18710103703836

