

# PHILIPS

## NORELCO

electric shaver and  
toothbrush

Premium men's care  
kit

IconiQ special edition shaver

DiamondClean sonic toothbrush

Wireless charger



## Designed for perfection with wireless charging

A refined way to start the day for a man with style. Philips pairs a sleek DiamondClean toothbrush with a unique retro-inspired electric shaver. Look and feel your best with a premium shave and outstanding tooth whitening performance.

### Unique retro-futuristic design

- Optimal ergonomics for the best shave results

### Perfection in every shave

- V-Track Precision Blades deliver a close shave in fewer strokes
- Heads move in 8 directions for an extremely close result
- Get a comfortable dry or refreshing wet shave

### Smart of use

- Wireless charging pad
- Click-on beard styler with 5 length settings
- Click-on brush to cleanse more thoroughly than by hand

### Whiter, healthier teeth for life

- Patented Sonicare technology for a superior clean
- Up to 7X better plaque removal than a manual toothbrush
- Whiter teeth in just one week
- 5 brushing modes for a customized clean

S8880/88

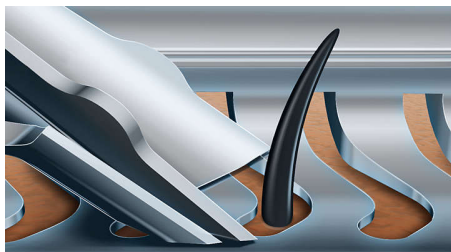
# Highlights

## Wireless charging pad



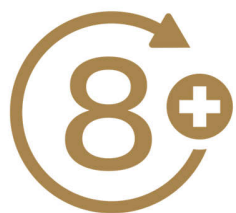
One wireless charging pad to charge all your Qi-enabled devices, including your Qi-enabled smartphone.

## V-Track Precision Blades



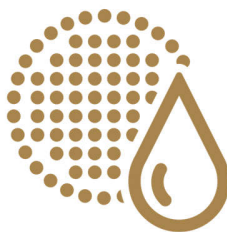
The V-Track Precision Blades collect hair in the optimal cutting position, resulting in a more comfortable shave. The blades also self-sharpen to ensure a premium shave day after day.

## ContourDetect Technology



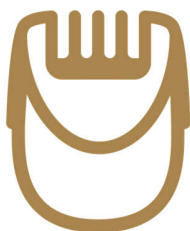
Follow every contour of your face and neck with 8-directional ContourDetect technology. You'll catch 20% more hairs\* in a single pass, resulting in an extremely close, smooth shave.

## SmartClick Facial Cleansing Brush



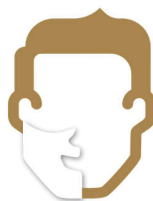
Click-on brush to cleanse your face more thoroughly than washing by hand. Use it with the cleanser of your choice. It removes dead skin cells and increases micro-circulation, leaving your skin feeling fresh and radiant.

## SmartClick Beard Styler



Change your look with the SmartClick Beard Styler attachment. Choose from 5 length settings to create anything from a perfect stubble look to a short, neatly trimmed beard. Rounded tips and combs are designed to prevent skin irritation.

## Shave Wet or Dry



Choose a quick dry shave or a more comfortable wet shave with gel or foam – even in the shower.

## Patented Sonicare technology



At over 31,000 brush strokes per minute, Philips Sonicare electric toothbrushes deliver a superior clean that you'll both see and feel. The dynamic cleaning action of our sonic technology drives fluid deep between teeth and along the gumline. You get a powerful yet gentle clean that delivers clinically proven results.

## Removes up to 7X more plaque

Removes up to 7 times more plaque from hard to reach places than a manual toothbrush.

## Whiter teeth in just one week



Removes up to 100% more stains than a manual toothbrush\*. DiamondClean toothbrush heads, Philips Sonicare's best whitening brush head, have diamond shaped bristles to effectively yet gently remove surface stains and scrape away plaque. Removes stain build up from coffee, tea, red wine, cigarettes and tobacco in just 1 week.

# Specifications

## Cleaning performance

**Performance:** Removes up to 7x more plaque\*

**Health benefits:** Improves gum health in only two weeks

**Speed:** Up to 31,000 brush strokes per minute

**Timer:** Quadpacer and SmarTimer

**Whitening benefits:** Whitens teeth in 1 week

## Modes

**Clean:** For exceptional everyday clean

**Gum Care:** Gently massages gums

**Deep Clean:** For an invigorating deep clean

**White:** Removes surface stains

**Sensitive:** Gentle teeth and gum cleaning

## Accessories

**Pouch:** Soft pouch

**SmartClick:** Oil-control cleansing brush, Beard styler

**Maintenance:** Cleaning brush, Protective cap, Holder tool

**Wireless charging:** Charging adaptor (IPX4),

Wireless charging pad (IPX7)

**Toothbrush heads:** 2 DiamondClean standard heads

## Power

**Run time:** Up to 2 weeks' shave, Toothbrush up to 3 weeks

**Charging:** 2 hours full charge, Quick charge for 1 shave, Toothbrush 12 hours charge

**Battery Type:** Lithium-ion

**Automatic voltage:** 100-240 V

## Design

**Rotary switch**

**Accent color:** Rose gold

**On/Off switch color:** Aluminium Black anodized brushed

**Handle color:** Magic black ultra matte

## Service

**2-year guarantee**

**Replacement head:** Replace every 2 yrs with SH90

## Shaving Performance

**Contour following:** 8-direction

ContourDetectHeads

**Shaving system:** V-Track Precision Blade System, Super Lift & Cut Action

**SkinComfort:** AquaTec Wet & Dry

## Ease of use

**Cleaning:** Fully washable

**Display:** Battery low indicator, Charging Indicator with buzzer

**Brush head system:** Easy click-on brush heads

**USB interface:** Support USB interface



\* For compatibility, look for the Qi logo (as picture below left) on supported devices. The Qi logo may be printed on the device, package or on the user manual. Devices with the Qi logo will be interoperable. The charge pad may not always work 100% on devices or accessories without the Qi logo.

\* There are 3rd party vendors that sell Qi certified smartphone sleeves. They may carry the Qi logo will be guaranteed to work with the charge pad. There are many wireless charging accessories that are unlicensed and not tested. These will not carry the Qi logo and may not work with the charge pad.

\* The charge pad may charge slower than a wired charger. That is due to the limitation of the bundled power adapter.

\* Cut 30% closer in less strokes - versus SensoTouch

\* SmartClick cleansing brush - compared to manual cleansing in same condition, according to the results from the external clinical test on 30 candidates and in 3 hours after cleansing

\* Removes up to 100% more stains - than a manual toothbrush.

\* Removes up to 10x more plaque - than a manual toothbrush.