

PHILIPS

Delicate areas
epilator

Satinelle

Unique ergonomic design
for easy handling and comfort



HP6565/60



Perfect handling for delicate area epilation

Reaches and removes hairs gently & without hassle

Delicate areas like armpits, bikini area or face have special needs when it comes to epilation. Our delicate areas epilator is designed for perfect handling and skin comfort, making it possible to comfortably reach and remove hairs.

All the freedom, none of the hassle

- Visibility & hygiene thanks to the open epilating system
- Cordless for added convenience
- Wet and Dry, also for use in the shower or bath

Gentle on skin to enjoy long-lasting smoothness

- Unique Philips epilating system with ceramic textured discs

Specially designed for safe use

- Integrated safety bar protects your delicate skin

Maximum reach and easy handling

- Access all areas with uniquely designed small head
- Ergonomic s-shape for easy handling

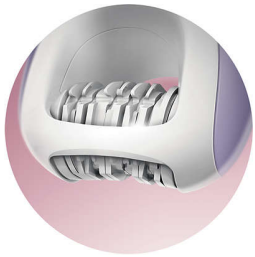
Highlights

Ergonomic s-shape



The ergonomically s-shaped body makes it easy to handle and manoeuvre into all areas. The grip on the back ensures no slip when using in the shower or bath.

Protect delicate skin



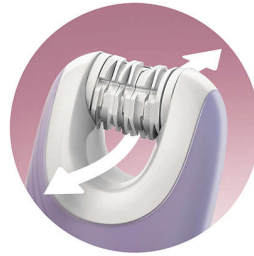
The integrated safety bar prevents from skin pinching and makes sure that nothing can happen to your skin.

Gentle tweezing discs



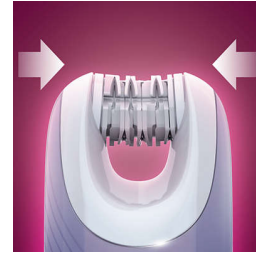
The unique Philips epilating system with ceramic textured discs is designed for optimal grip and hair catching. The discs remove hair as short as after 2-3 days regrowth without pulling your skin.

Better visibility and hygiene



The gap between the head and the s-shaped body improves visibility by letting you directly see the area you're epilating. The open epilating system also means you can easily clean the device.

Access all areas



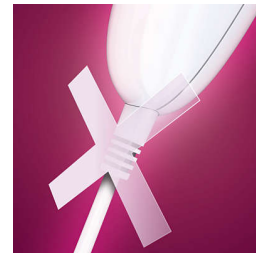
Uniquely designed small head enables you to confidently reach all body areas, even your most intimate areas.

Wet and dry



You can use the epilator wet and dry for a convenient and hygienic epilation when and where you want, even in the shower or bath.

Cordless



Cordless so you can use the epilator when and where you want as well as reach all areas easily.

Specifications

Technical Specifications

Minutes of application: 30min

Number of catching points: 12

Minutes of charging: 300min

Number of discs: 7

Pulling actions second/speed: 440

Voltage: 4,3V, 150mA, 0,65W

