

Philips Beardtrimmer
series 3000
beard and stubble trimmer

0.5mm precision settings
Stainless steel blades
45mins cordless use/10h charge

Perfect beard made easy

The most convenient way to start with your beard

Style your beard the way you want with this beard trimmer. Precision from as short as 0.5mm up to 10mm.

Easy to use

- Up to 45 minutes of cordless use after 10 hours charging
- Easy to grip
- Simple maintenance

Skin friendly performance

- Skin-friendly rounded tips for smooth skin contact

Precision

- 0.5mm precision
- Easy to select and lock-in length settings, 0.5mm to 10mm

QT4005/13

PHILIPS

beard and stubble trimmer
0.5mm precision settings Stainless steel blades, 45mins cordless use/10h charge

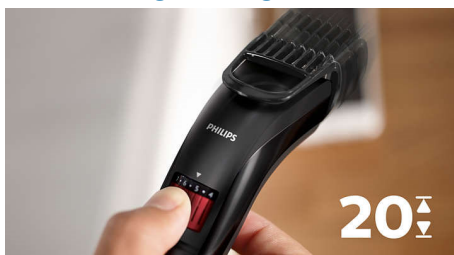
Highlights

Perfect 3-day beard every day



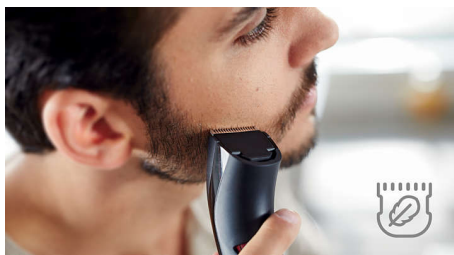
Set the trimmer at the lowest position for a perfect stubble, just 0.5mm long.

20 lock-in length settings



Turn the wheel to simply select and lock-in the length settings you want: from a 3-day beard of 0.5mm up to a full beard of 10mm, in precise 0.5mm steps.

Skin-friendly high-performance



Blades stay extra-sharp to always cut hairs neatly and effectively, but have rounded blade tips and combs to prevent irritation.

Cordless Use



Rechargeable only. Up to 45 minutes of cordless power after 10 hours of charging.

Ergonomic design



A fast trimmer that's comfortable to hold and use. So you can handle those hard-to-reach areas more easily.

Easy to clean



Detach the head of your Philips beard trimmer and rinse it under the tap for easy cleaning. Then dry it before you put it back on the appliance.

QT4005/13

Specifications

Create the look you want

- Styles: Short beard, Stubble look

Cutting system

- Cutting element: Stainless steel blades
- Cutter width: 32 mm
- Number of length settings: 20
- Range of length settings: 0.5 up to 10 mm
- Precision (size of steps): By 0.5mm mm
- Comb type: Stubble
- Non-scratching teeth: For more comfort

Ease of use

- Zoom wheel: Easily adjust length settings
- Secured length settings
- Battery: 1x AAA NiMH
- Charge indication: On plug
- Easy Cleaning: Washable attachments

Design

- Handle: Easy grip

Accessories

- Cleaning brush

Power system

- Battery type: Ni-MH
- Running time: Up to 45 minutes
- Worldwide voltage: 100-240 V
- Charging time: 10 hours

Service

- 2-year worldwide guarantee



Issue date 2022-06-17

Version: 11.1.1

© 2022 Koninklijke Philips N.V.
All Rights reserved.

Specifications are subject to change without notice.
Trademarks are the property of Koninklijke Philips N.V.
or their respective owners.

www.philips.com