

PHILIPS

Straightener

EssentialCare

Ionic conditioning

220°C professional temperature

Accurate control

HP8324/03



Glossy and sleek with ionic shine

Straightener with accurate control

Specially designed for ionic care and accurate control, Philips Essential Care straightener allows you to get the straight and shiny look you want precisely, while being gentle on your hair.

Ease of use

- Fast heat up time, ready to use in 60 seconds
- Closing lock to close the handle for easy and safe storage
- Universal voltage
- 1.8 m power cord
- 2 years of worldwide guarantee
- Automatic shut-off after 60 min
- Swivel cord to prevent tangled wires

Less hair damage

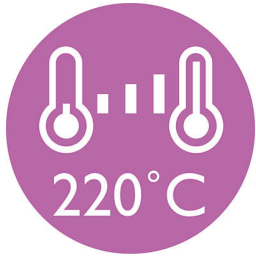
- More care with ion conditioning for shiny, frizz-free hair
- Accurate control 220°C with variable temperature
- Ceramic coating for ultra-smooth gliding

Sleek style

- 220°C professional high heat for perfect results

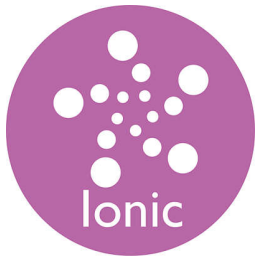
Highlights

220°C variable temperature



Accurate control 220°C with variable temperature

Ionic Care



Give your hair an instant care with ionic conditioning. Charged negative ions eliminate static, condition the hair and smooth down the hair cuticles to intensify the hair's shine and glossiness. The result is hair that is beautifully shiny, smooth and frizz-free.

Instant heat up



The straightener has a fast heat up time, being ready to use in 60 seconds

Handle closing lock



The straightener has a closing lock mechanism. Located at the base of the straightener, this locks plates, making storage quick and easy and helping to protect the straightener from accidental damage.

Swivel cord

Useful swivel cord technology rotates the cord to prevent tangled wires.

Safe usage



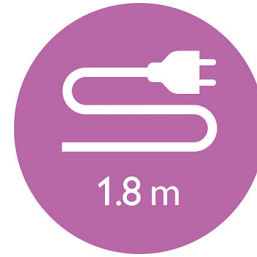
Some hair straighteners and curling irons have been equipped with an automatic shut-off feature. This feature has been designed to provide peace of mind. If left on, the appliance will automatically switch off after 60 min.

Ceramic coating



The smooth ceramic coated plates prevent damage to your hair during styling.

1.8 m cord



1.8 m power cord

Universal voltage

Worldwide voltage for getting the perfect travel companion

2 years guarantee



2 years of worldwide guarantee.

220°C professional temperature

This high temperature enables you to change the shape of your hair and gives you that perfect look you want.

Specifications

Hair type

End result: Straight

Hair length: Long, Medium, Short

Hair thickness: Medium, Thick, Thin

Technical specifications

Color/finishing: black and pearl peach

Heating time: 60s

Voltage: 110-240 V

Cord length: 1.8 m

Maximum temperature: 220 °C

Heater type: PTC

Features

Ceramic coating

Swivel cord

Service

2-year worldwide guarantee

