

# PHILIPS

## Hair Dryer

### Prestige Pro

2300W drying power

Powerful AC motor

High air speed up to 170 km/h\*

Style & Protect nozzle



HPS920/03



## Designed for fast professional drying and styling

Philips Hair Dryer Prestige Pro features 2300W and a professional AC motor that reaches up to 170 km/h\*, which is 50% faster\*\*. The unique Style&Protect concentrator enables professional styling without overheating.

### Easy to use

- 3m long cord
- 2-year warranty & 3 extra years upon online registration

### Beautifully styled hair

- Six speed and heat settings for optimal control
- Cool Shot sets your style
- 2 thin styling nozzles for perfect styling: 6mm & 8mm
- 2300W of fast, high performance drying power
- Fast drying, powerful AC motor

### Less hair damage

- Ionic care for smooth, frizz-free, shiny hair
- ThermoProtect temperature setting
- More care with Style & Protect concentrator

# Highlights

## Professional AC motor



The Pro Hair Dryer has a high performance AC motor with up to 170 km/h\* air speed, which is 50% faster\*\*. It is developed for professional, effective results.

## 2300W of power



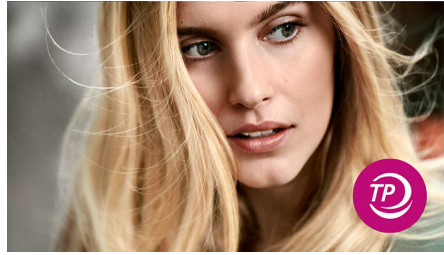
This 2300W professional hair dryer creates a powerful airflow. The resulting combination of power and speed makes drying and styling your hair quicker and easier.

## Ionic care



Charged negative ions eliminate static, condition the hair and smooth down the hair cuticles to intensify the hair's shine and glossiness. The result is hair that is smooth, shiny and frizz-free.

## ThermoProtect temperature



The ThermoProtect temperature setting provides the optimal drying temperature and gives additional protection from overheating the hair. With the same powerful airflow, you will get the best results in a caring way.

## 2 thin styling nozzles



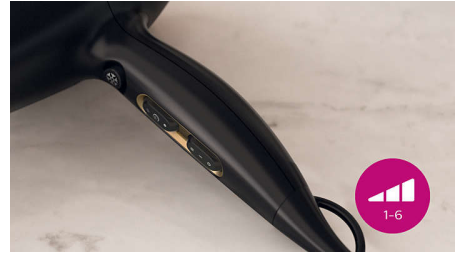
Perfect styling results with a concentrator for every need. The 6mm - for precise styling with maximum care and the 8mm nozzle for brushing and polishing of the hair.

## Style & Protect concentrator



The uniquely designed Style & Protect concentrator with a special flap allows precise styling, while caring for your hair. The 6 mm nozzle forces the flap to open when the hair gets too hot, dissolving excessive heat and improving styling power.

## Accurate control



The speed and heat required can be easily adjusted to create the perfect style. Six different settings ensure optimal control for precise and tailored styling.

## Cool Shot



A must-have professional function, the Cool Shot button provides an intense burst of cold air. It is used after styling to finish and set the style.

## 3m cord



The professional 3m long cord reinforces the ease of use anywhere you want.

## Long-lasting warranty

Extend your 2-year warranty with 3 extra years with online registration of your product within 3 months of purchase.

# Specifications

## Technical specifications

Cord length: 3 m

Voltage: 220-240 V

Wattage: 2300 W

Motor: AC

Dual Voltage: No

Color / Finishing: Black & Gold

Drying speed: up to 170 km/h\*

## Features

Foldable handle: No

Cool shot

Storage hook

Heat/Speed settings: 6

Removable air inlet filter

## Service

2-year worldwide warranty: Plus 3 years upon registration

## Caring technologies

Ionic Care

ThermoProtect setting

Style & Protect Concentrator

