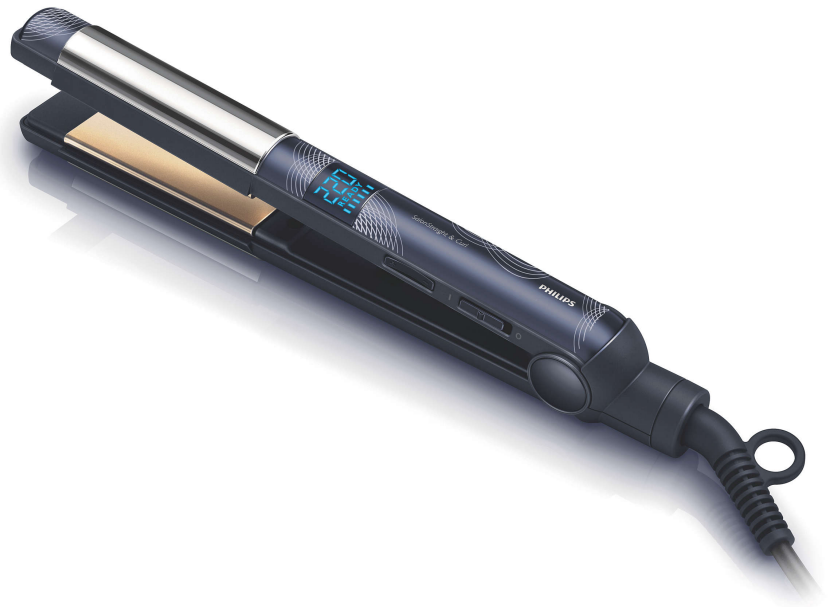


PHILIPS

Straightener

HP8290/00



Straight, curl and care

SalonStraight & Curl Hair Straightener

Get straight, wavy or curly hair with the SalonStraight & Curl. This versatile ceramic hair straightener and curler in one, operates with care to a professional temperature of 220°C and features adjustable digital settings.

Ease of use

- Digital settings with adjustable heat to get smooth results
- Swivel cord to prevent tangled wires
- Automatic shut-off after 60 min
- 1.8 m cord for maximum flexibility
- Included: pouch
- Universal voltage
- Fast heat up time, ready to use in 60 seconds

Beautifully styled hair

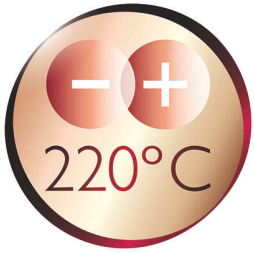
- 220°C professional high heat for perfect salon results
- Ceramic plates for smooth gliding and shiny hair
- Rounded edges for perfect curls and beautiful waves
- CoolShield to set your style

Less hair damage

- EHD+ technology for more protection and shinier results

Highlights

220°C professional temperature



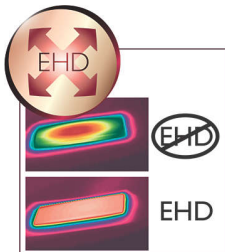
This high temperature enables you change the shape of your hair, and gives you that perfect look like you've just come from the salon.

Ceramic plates



Ceramic is microscopically smooth and durable by nature and it is one of the best materials for straightening plates. The plates glide effortlessly through your hair, giving you perfect shiny hair.

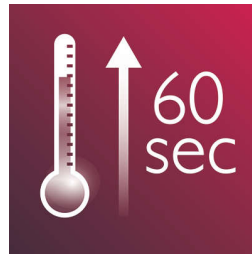
EHD+ technology



Advanced Philips EHD+ technology means that your styler will always distribute the heat very evenly - even at high temperatures, and

prevents damaging hot spots. This gives added protection and thus helps to keep your hair healthy and shiny.

Instant heat up



The straightener has a fast heat up time, being ready to use in 60 seconds

Safe usage



Some hair straighteners and curling irons have been equipped with an automatic shut-off feature. This feature has been designed to provide peace of mind. If left on, the appliance will automatically switch off after 60 min.

Rounded edges

Ceramic plates with gentle rounded edges make creating flicks and curls easier than ever. Wrap the hair around the rounded edge, and simply pull the straightener down as you normally do.

CoolShield

The unique CoolShields are specially designed to cool the hair after immediately after styling. This sets your style and give you longlasting curls and waves.

Swivel cord



Useful swivel cord technology rotates the cord to prevent tangled wires.

Included: pouch

Included: pouch

1.8 m cord

1.8 m cord for maximum flexibility

Digital settings



Digital settings with adjustable heat to get smooth results with all hairtypes

Universal voltage



Worldwide voltage for getting the perfect travel companion

Specifications

Technical specifications

Cord length: 1,8 m

Heating time: 60s

Maximum temperature: 220 °C

Features

Ceramic coating

Swivel cord

Hanging loop

Hair type

End result: Multi-styles, Straight

Hair thickness: Thin, Thick

Hair length: Long, Medium

