

PHILIPS

Multi-Styler

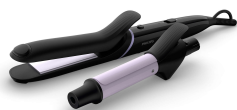
StyleCare

10+ styles in a box

5 attachments & accessories

Style Guide

OneClick Technology



BHH811/03



Click on your style

10+ looks with style guide

Every day a different look! From perfectly polished, straight and curly hair to updos and more, create more than 10 styles with the new Philips Multi-Styler with style guide.

Ease of use

- OneClick Technology for quick and easy attachment changing
- Fast heat up time, ready to use in 60 sec
- Cool tip for easier and safer use
- 1.8 m power cord
- Swivel cord to prevent tangled wires

Beautifully styled hair

- Style guide and 3 useful hair accessories for 10+ styles
- 25mm curling barrel for tight to loose curls
- 80mm straightener for sleek results
- Professional high heat for perfect results

Care for your hair

- Protective ceramic coating

Highlights

Straightener for sleek results



80mm straightening plates for perfect sleek results.

Curler for fabulous curls



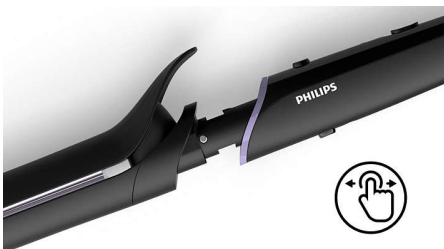
25mm curling barrel for perfect tight to loose curls.

3 versatile hair accessories



Including a style guide to create 10+ styles, 2 elastic bands for easy hairstyling and a hair loop to experiment with your style.

OneClick release technology



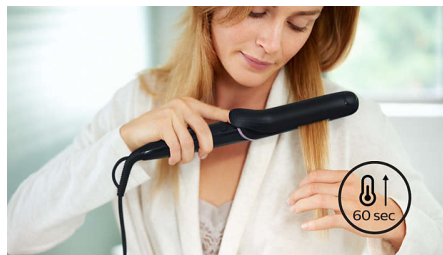
Changing attachments has never been quicker or easier with the multi-styler's OneClick design. Simply click on and push the button, holding the cool tip, to release.

Up to 210°C temperature



This high temperature enables you to change the shape of your hair and gives you that perfect look you want.

Fast heat up time



This styler has a fast heat up time, being ready to use in 60 seconds.

Gentle on your hair



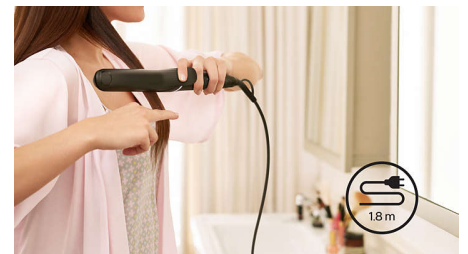
Protective ceramic coating ensures even heat distribution and less hair damage for shiny and soft hair.

Cool tip



The tip of the styler is made from a special heat insulating material to keep it cool; you can safely hold it while you're styling for optimal ease of use.

1.8 m cord



Convenient to use thanks to the 1.8m power cord length.

Swivel cord



Useful swivel cord technology rotates the cord to prevent tangled wires.

Specifications

Attachments

Curler
Straightener

Accessories

Elastic band: 2
Hair loop
Style guide: with 10 easy to create styles

Technical specifications

Voltage: 110–240V
Plate size: Curler 90 mm
Heater type: PTC
Cable length: 1.8 m
Styling temperature: Up to 210°C
Heating time: 60 s

Features

Cool tip
Swivel cord
Barrel diameter: 25 mm

Coating of heated parts: Ceramic
Storage hook
OneClick release technology
Straightener size: 30x80 mm

Service

2-year worldwide guarantee

