

PHILIPS

Heated
straightening brush

StyleCare Essential

Extra large brush area

ThermoProtect technology

Tourmaline ceramic coating



BHH880/03



Naturally straight hair in 5 minutes*

Smooth, shiny, frizz-free hair

Reveal naturally straight, beautifully shiny hair in just 5 minutes. Our ThermoProtect technology and bristle design work together for healthy looking, frizz-free hair.

Ease of use

- Swivel cord
- Fast heat-up time
- 1.8m cord for maximum flexibility
- Large paddle-shaped brush
- Ready to use indicator light

Care and protect

- Tourmaline ceramic coating
- ThermoProtect technology
- Triple bristle design
- 2 temperature settings to suit your hair type

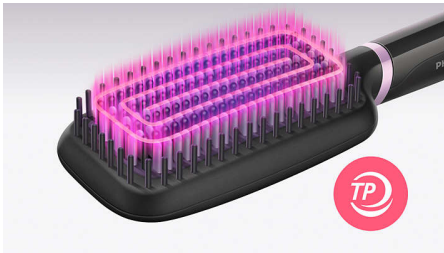
Highlights

Tourmaline ceramic coating



Tourmaline ceramic coating for shiny, smooth, frizz-free hair.

ThermoProtect technology



ThermoProtect technology maintains constant temperature across the brush to prevent overheating for protected, healthy looking hair.

2 temperature settings

Two temperature settings (170°C & 200°C) to best suit your hair type.

Triple bristle design



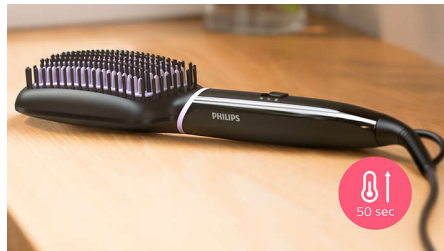
Triple bristle design gently detangles and straightens while protecting your scalp from heat.

Paddle-shaped brush



The paddle-shaped design to straighten more hair in one go.

Fast heat-up time



Ready to use in 50 seconds.

Ready to use indicator light



LED light indicates when the brush is ready to use.

1.8m cord



1.8m cord.

Swivel cord



Swivel cord for comfortable use.

Specifications

Technical specifications

Cord length: 1.8 m

Voltage: Universal V

Heater type: PTC

Product size (mm): 350 L x 75 W x 48 D

Total number of bristles: 247

LED light indicator: White color

Features

Auto shut-off: after 60 min

Temperature Settings: 2 settings, 170°C and 200°C

Brush shape: Paddle

Brushing area (mm): 116 L x 60 W

Number of heated bristles: 111

Service

2-year guarantee

Ease of use

Storage hook

Swivel cord

Caring technologies

ThermoProtect

Tourmaline ceramic coating

