

Philips Shaver series 5000  
Shaving heads

### MultiPrecision Blades

Fits S5000 (S5xxx), excl. S55xx  
Fits AquaTouch (AT8xx, AT7xx,  
S5xxx)  
Fits S6000 (S6xxx)

SH50/50



## Reset your shaver to new

Change heads every 2 years for best results

Within two years your shaver heads cut 9 million hairs on your face. Replace the shaver heads and get back to 100% performance. Compatible with the Series 5000, 6000 and AquaTouch Shaver.

#### Easy to use

- Reset your shaver after replacing shaving heads
- Replace your shaving heads in just two steps
- Reset your shaver to new
- Easy to replace shaving heads

#### Compatibility

- Replacement heads for Shaver Series 5000 & 6000

#### Close, fast shave

- Blades raise then cut long and short hairs for a fast shave
- Super Lift & Cut Action lifts hairs to cut comfortably close

# PHILIPS

## Shaving heads

MultiPrecision Blades Fits S5000 (S5xxx), excl. S55xx, Fits AquaTouch (AT8xx, AT7xx, S5xxx), Fits S6000 (S6xxx)

# Highlights

## Compatible with S5000 & S6000



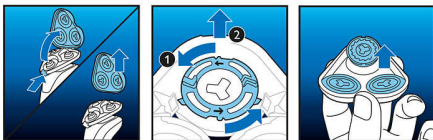
SH50 replacement heads are compatible with Shaver series 5000 (S5xxx) excluding S55xx, Shaver series 6000 (S6xxx), AquaTouch (AT8xx, AT7xx, S5xxx), and PowerTouch (PT8xx, PT7xx).

## Replacement reminder



The latest Philips shavers have an inbuilt replacement reminder in the form of a shaving unit symbol. This symbol will light up and indicate you when to replace shaving heads.

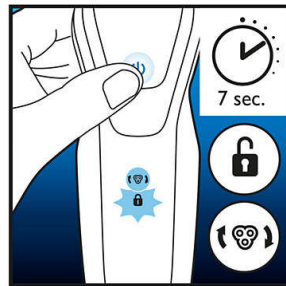
## Simple replacement



1. Open the shaver by pressing the "release" button; 2. Remove the retaining rings by turning them counterclockwise; 3. Take out

the old shaving heads and carefully insert replacements; check that the heads align exactly in the setting; 4. Replace the retaining rings and secure them by turning the lock clockwise; 5. When you close the shaving head properly, you will hear it click into place.

## How to reset your shaver



After replacing shaving heads, you can reset the replacement reminder by pressing the on/off button for more than 7 seconds. Otherwise, replacement trigger will turn off automatically after 9 successive shaves.

## Reset your shaver to new



To get back to 100% performance, replace your shaving heads every 2 years.

SH50/50

## MultiPrecision blades



Get a shave that's fast and close. Our MultiPrecision blades raises and cuts all hairs and remaining stubble – all in a few strokes.

## Super Lift & Cut Action



Shave closer with the dual-blade Super Lift & Cut action. The first blade raises each hair while the second blade comfortably cuts below skin level, for really smooth results.

## Shaving heads

MultiPrecision Blades Fits S5000 (S5xxx), excl. S55xx, Fits AquaTouch (AT8xx, AT7xx, S5xxx), Fits S6000 (S6xxx)

SH50/50

# Specifications

### Shaving heads

- Shaving heads per packaging: 3
- Fits product type: Shaver series 5000 (S5xxx), excl. S55xx, PowerTouch (PT8xx, PT7xx), Fits AquaTouch (AT8xx, AT7xx, S5xxx), Shaver Series

6000 (S6xxx)

### Cleaning

- Usage: Use cleaning spray HQ110



Issue date 2023-11-27

Version: 14.14.1

© 2023 Koninklijke Philips N.V.  
All Rights reserved.

Specifications are subject to change without notice.  
Trademarks are the property of Koninklijke Philips N.V.  
or their respective owners.

[www.philips.com](http://www.philips.com)