



Philips MoistureProtect  
Dryer

**2300W**

MoistureProtect Sensor  
Ionic Care  
6 speed/ temperature settings

**HP8280/03**

## Preserve your hair's natural hydration

### For a healthy shine

Moisture Protect sensor uses infrared technology to diagnose your hair and adapts the temperature to preserve natural hydration.

#### **Ease of use**

- Cool Shot to set your style
- Six speed and heat settings for perfect control

#### **Beautifully styled hair**

- Ionic conditioning prevents static for frizz free shiny hair

#### **Caring technology**

- MoistureProtect Sensor
- Protection from overheating

#### **MoistureProtect technology**

- Perfect moisture protection with exclusive sensor

# PHILIPS

# Highlights

## MoistureProtect Sensor



The truly innovative Infrared MoistureProtect technology continuously monitors and adapts the drying temperature to match your hair's drying needs. The intelligent sensor measures your hair's surface temperature 4000 times in one drying session, and adjusts the heat to prevent moisture loss and cuticle damage. With ultimate moisture retention, your hair gets our best shine and softness. You can switch on/off the sensor upon your needs.

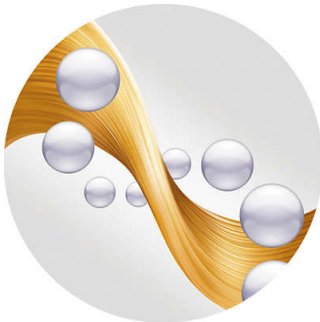
## MoistureProtect technology

Uses infrared technology to diagnose your hair and adapts the temperature to preserve its natural hydration.

## ThermoProtect temperature

The ThermoProtect temperature provides the optimal drying temperature and gives additional protection from overheating the hair. With the same powerful airflow, you can get the best results in a caring way.

## Ionic conditioning



Charged negative ions eliminate static, condition the hair and smooth down the hair cuticles to intensify

the hair's shine and glossiness. The result is hair that is smooth, shiny and frizz-free.

## Six speed and heat settings



Easily set and control the heat and speed settings to create the perfect style. Choose from 3 heat and 2 speed settings for full control and precise drying and styling.

## Cool Shot



The Cool Shot button provides an intense burst of cool air. It is used after styling to finish and set the style.

# Specifications

## Technical specifications

- Cord length: 2.5 m
- Voltage: 220-240 V
- Wattage: 2100-2300W W
- Motor: DC
- Dual Voltage: No

## Features

- Cool Shot
- 6 temperature settings

## Accessories

- Nozzle: Diffuser

## Service

- 2-year worldwide guarantee

## Caring technologies

- Ionic Care
- MoistureProtect technology



Issue date 2022-06-25

Version: 6.1.1

© 2022 Koninklijke Philips N.V.  
All Rights reserved.

Specifications are subject to change without notice.  
Trademarks are the property of Koninklijke Philips N.V.  
or their respective owners.

[www.philips.com](http://www.philips.com)