



Philips
shaving heads

TripleTrack
Replacement unit

RQ10/53

Keep a close shave

Change heads every 12 months for best results

Every year your blades travel the height of Mt. Everest... 49 times! After such a workout, even the best materials can lose their edge. Retain your shaver's peak performance - replace heads every 12 months.

Comfortably close

- Super Lift & Cut shaving technology with dual blade system

Simple replacement

- Easy click off, click on

A fast and close shave

- Triple-Track shaving heads with 50% more shaving surface

Perfectly close, even on the neck

- Flex & Pivot Action follows every curve

PHILIPS

Specifications

Shaving heads

- Fits product types: RQ1050, RQ1060, RQ1075, RQ1085, RQ1095, RQ1051, RQ1052, RQ1053,

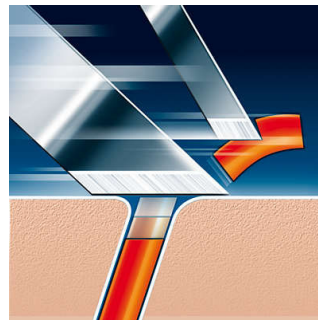
RQ1061, RQ1062, RQ1076, RQ1077, RQ1087, RQ1090

- Shaving units per packaging: 1

RQ10/53

Highlights

Super Lift & Cut technology



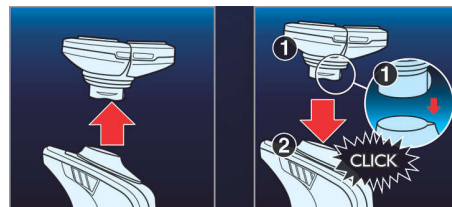
Dual blade system of your Philips shaver: first blade lifts, second blade cuts for a comfortable close shave.

Flex & Pivot Action



Three independently flexing heads in a shaving unit that swivels with a full range of motion. This unique combination ensures optimum skin contact in curved areas to catch even the most problematic neck hair.

Easy click off, click on



Easily renew your shaving unit using our click off, click on system.

Triple-Track shaving heads



The three shaving tracks of the Triple-Track shaving heads offer 50% more shaving surface than standard, single track rotary shaving heads.



Issue date 2023-09-21

Version: 6.0.1

UPC: 0 75020 01850 2

© 2023 Koninklijke Philips N.V.
All Rights reserved.

Specifications are subject to change without notice.
Trademarks are the property of Koninklijke Philips N.V.
or their respective owners.

www.philips.com