

Philips Hairclipper series
9000
Hair clipper

Premium
Dual sided cutting element

QC5770/80

Professional haircuts at home

with 1mm precision & dual-sided trimmer

The Philips hair clipper offers you ultimate precision thanks to its 1 mm length settings and integrated precision trimmer. The 3D contour following comb guarantees skin comfort. And the hair thinning comb creates a natural looking haircut.

Best performance that feels great

- Diamond like carbon technology stays sharper longer
- 3D contour following comb for speed and comfort
- Skin friendly blades and comb to prevent scratching

Brings maximum ease of use

- Multi-functional display for full control
- Storage case to protect all items

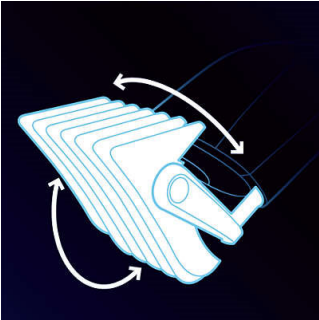
Provides optimal power

- Corded and cordless use for maximum power and freedom
- Strong lithium-ion battery for optimal power use

PHILIPS

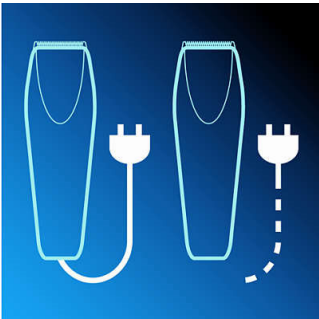
Highlights

3D contour following comb



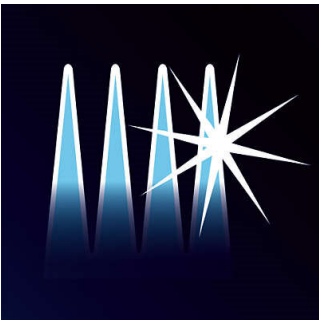
The unique 3-dimensional contour following comb closely follows every curve giving you fast and comfortable results.

Corded and cordless use



Use your Philips trimmer corded or cordless with the recharged battery for maximum power and freedom.

Diamond like carbon technology



The innovative Diamond like carbon technology ensures the cutting element stays sharper longer.

Multi-functional display



The multi-functional display shows battery status, chosen length setting in millimeters and whether the hair thinning option is on or off

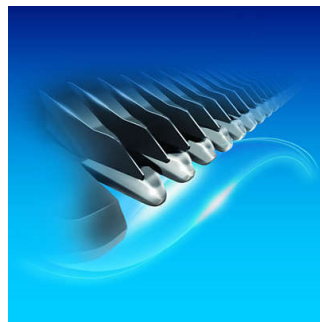
Powerful Lithium-Ion battery

This product has a powerful lithium-ion battery with quick charge so you can charge the product in only 1 hour for 50 minutes use.

Storage case

The high quality case provides a storage solution for all the accessories and protects them from damage

Skin friendly



The uniquely rounded blades and comb tips prevent scratching the skin.

Specifications

Cutting system

- Cutting element: Stainless steel blades
- Cutter width: 41/15 mm
- Number of length settings: 38
- Range of length settings: up to 42 mm
- Precision (size of steps): by 1 mm
- Self-sharpening stainless steel blades
- Rounded tips: Skin friendly

Ease of use

- Maintenance free - No Oil need

Design

- Shape: Ergonomic

Accessories

- Cleaning brush
- Hair comb

Power system

- Battery type: Li-ion
- Running time: 60 minutes
- Charging time: 1 hour

Attachments

- Hair thinning comb

Service

- 2-year worldwide guarantee

