

Philips Shaver series 9000  
Shaving heads

V-Track Precision Blades PRO

Fits S9000 (S9xxx)

Fits Star Wars Shaver SW97xx

Fits Star Wars Shaver SW67xx

SH90/60



## Reset your shaver to new

Change heads every 2 years for best results

Within two years your shaver heads cut 9 million hairs on your face. Replace the shaver heads and get back to 100% performance. Compatible with the Series 9000 Shaver.

### Easy to use

- Reset your shaver after replacing shaving heads
- Easy to replace heads
- Replace your shaving heads in just two steps
- Reset your shaver to new

### Compatibility

- Replacement heads for Shaver series 9000

### Perfection in every pass

- Our best shaving system on 1-3 day beard

# PHILIPS

## Shaving heads

V-Track Precision Blades PRO Fits S9000 (S9xxx), Fits Star Wars Shaver SW97xx, Fits Star Wars Shaver SW67xx

# Highlights

## Compatible with Series 9000

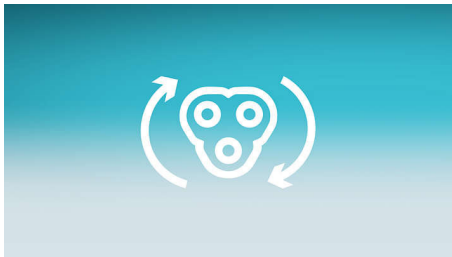


SH90 replacement heads are compatible with Shaver series 9000 (S9xxx), 8000 (S8xxx), Star Wars shaver SW9700 and SW6700.

## V-Track blade system PRO

Get the perfect close shave. The V-Track Precision PRO Blades gently positions each hair in the best cutting position, from 1 day up to 3 day beard and even the flat laying and different length of hairs. Cuts 30% closer\* in less strokes leaving your skin in great condition.

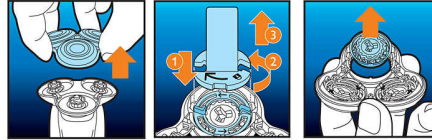
## Replacement reminder



The latest Philips shavers have an inbuilt replacement reminder in the form of a shaving unit symbol. This

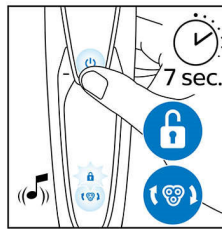
symbol will light up and indicate you when to replace shaving heads.

## Simple replacement



1. Pull the shaving head holder off. 2. Replace the shavings heads with new ones. 3. Reattach the shaving head holder. 4. To reset the shaver, press and hold the on/off button for more than 5 seconds.

## How to reset your shaver



After replacing shaving heads, you can reset the replacement reminder by pressing the on/off button for more than 7 seconds. Otherwise, replacement trigger will turn off automatically after 9 successive shaves.

## Reset your shaver to new



To get back to 100% performance, replace your shaving heads every 2 years.

SH90/60

# Specifications

## Shaving heads

- Shaving heads per packaging: 3
- Fits product type: Shaver series 9000 (S9xxx), Shaver series 8000 (S8xxx)

## Accessories

- Included in pack: Retaining ring holder



Issue date 2022-06-25

Version: 9.2.1

© 2022 Koninklijke Philips N.V.  
All Rights reserved.

Specifications are subject to change without notice.  
Trademarks are the property of Koninklijke Philips N.V.  
or their respective owners.

[www.philips.com](http://www.philips.com)

\* Versus its Philips predecessor