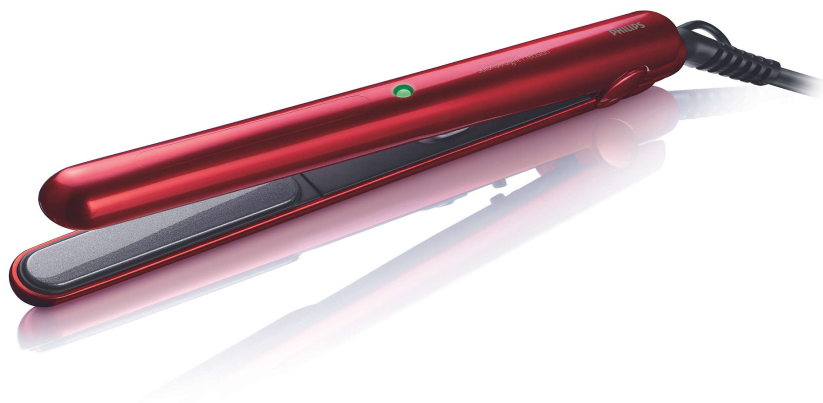


# PHILIPS

## Straightener

Ceramic

HP8331



## Perfect results for shorter styles

### SalonStraight Precision

Unique design for detailed styling. Perfect for shorter or layered hair, the SalonStraight Detailer offers ceramic straightening plates plus a professional styling temperature of 220°C.

#### **Ease of use**

- Swivel cord to prevent tangled wires
- Dual voltage for worldwide use
- On/off indication light
- On/off switch
- Protective sleeve
- 1.8 m power cord

#### **Beautifully styled hair**

- Ceramic plates for smooth gliding and shiny hair
- Unique ultra slim design for detailed styling
- 200°C professional high heat for perfect salon results

#### **Less hair damage**

- Rounded plates to prevent hair trapping

#### **Time saving**

- Instant heat: Ready to use within 30 seconds

# Highlights

## Ceramic plates



Ceramic is microscopically smooth and durable by nature and it is one of the best materials for straightening plates. The plates glide effortlessly through your hair, giving you perfect shiny hair.

## Unique ultra slim design

The ultra slim design enables you to come close to the root and to do detailed styling, this makes it perfect to style fringes, shorter and layered hairstyles.

## 200°C professional temperature

This high temperature enables you change the shape of your hair, and gives you that perfect look like you've just come from the salon.

## Rounded plates

The shape of the plate prevents that hair is caught between the housing and the plates. No more hair pulling!

## Protective sleeve

Take the straightener on the go. The cosmetic sleeve is heat resistant and enables protected storage and travel.

## On/off switch

On/off switch

## Swivel cord



Useful swivel cord technology rotates the cord to prevent tangled wires.

## Dual voltage



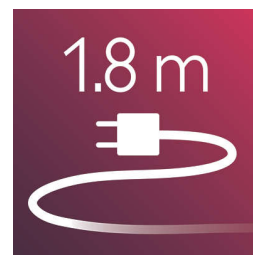
Dual voltage for worldwide use

## On/off indication light



On/off indication light

## 1.8 m cord



1.8 m power cord

## Instant heat

Instant heat: Ready to use within 30 seconds

# Specifications

## Technical specifications

**Cord length:** 1,8 m

**Voltage:** 110-240 V

**Wattage:** 25 W

## Hair type

**Current hair style:** Straight, Wavy, Curly

**End result:** Straight

**Hair thickness:** Thin, Thick

**Hair length:** Short

**For fragile hair**

## Serviceability

**Replacement**

