

Philips  
ProCare Straightener

**Ceramic plates**  
Even heat distribution 199C  
Ionic conditioning  
15 sec. heat up time

**HP8339/20**



## Perfect style at constant caring temperature

The Philips ProCare straightener protects the hair from overheating, due to its newly developed Dual-Care™ plates, with constant temperature and EHD Technology™

### **Ease of use**

- Automatic shut-off after 60 min
- Closing lock to close the handle for easy and safe storage
- 1.8 m power cord
- Universal voltage
- No more accidental change of settings with key-lock function
- Fast heat up time, ready to use in 15 seconds

### **Beautifully styled hair**

- Ceramic plates for smooth gliding and shiny hair

### **Less hair damage**

- Healthy hair without hotspots with Even Heat Distribution
- Healthier restyling with autoseettings to gentler temperature
- Caring and efficient straightening with constant temperature
- More care with ion conditioning for shiny, frizz-free hair

**PHILIPS**

# Highlights

## Ionic Care



Give your hair an instant care with ionic conditioning. Charged negative ions eliminate static, condition the hair and smooth down the hair cuticles to intensify the hair's shine and glossiness. The result is hair that is beautifully shiny, smooth and frizz-free.

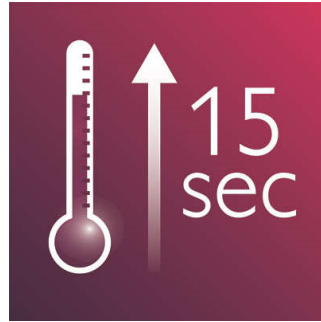
## Even Heat Distribution

Advanced Philips EHD+ technology means that your styler will always distribute the heat very evenly - even at high temperatures, and prevents damaging hot spots. This gives added protection and thus helps to keep your hair healthy and shiny.

## Constant temperature

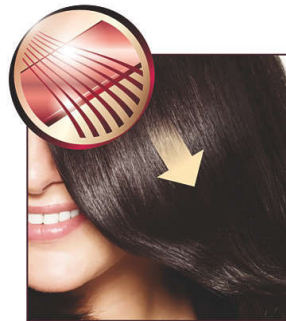
This straightener keeps a more constant temperature. Thanks to its high-performance heater it allows you to straighten your hair at a more caring temperature while getting the exact style you want!

## Instant heat up



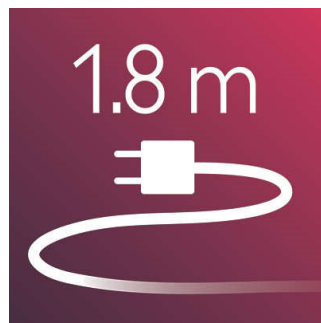
The straightener has a fast heat up time, being ready to use in 15 seconds

## Ceramic plates



Ceramic is microscopically smooth and durable by nature and it is one of the best materials for straightening plates. The plates glide effortlessly through your hair, giving you perfect shiny hair.

## 1.8 m cord



1.8 m power cord

## Safe usage



Some hair straighteners and curling irons have been equipped with an automatic shut-off feature. This feature has been designed to provide peace of mind. If left on, the appliance will automatically switch off after 60 min.

## Handle closing lock

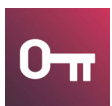


The straightener has a closing lock mechanism. Located at the base of the straightener, this locks plates, making storage quick and easy and helping to protect the straightener from accidental damage.

## Key-lock function



You are always in control. No more accidental switching on/off of the styler or temperature change with the Key-lock function. To unlock, press the button for 3 seconds.



# Specifications

## Technical specifications

- Cord length: 1,8 m
- Voltage: 110-240 V
- Heating time: 15s
- Color/finishing: Purple
- Maximum temperature: 199 °C
- Heater type: High-performance

## Features

- Ceramic coating

- Ready for use indicator
- Swivel cord

## Hair type

- End result: Straight
- Hair length: Long, Medium, Short
- Hair thickness: Medium, Thick, Thin

## Service

- 2-year worldwide guarantee



Issue date 2022-06-25

Version: 3.1.1

EAN: 08 71010 36413 39

© 2022 Koninklijke Philips N.V.  
All Rights reserved.

Specifications are subject to change without notice.  
Trademarks are the property of Koninklijke Philips N.V.  
or their respective owners.

[www.philips.com](http://www.philips.com)