



Philips SalonCurl Pro  
Curling iron

2.5 cm (1")

HP4683/00

# Perfect bouncy curls and waves

## SalonCurl Pro

The SalonCurl Pro features a ceramic 25mm curling tong and adjustable digital settings so you can create beautifully shiny curly looks in minutes. Once you've styled, simply set and go.

### **Ease of use**

- Cool tip for easier and safer use
- Swivel cord to prevent tangled wires
- Automatic shut-off after 60 min
- Safety stand for easy use
- 1.8 m power cord
- Universal voltage

### **Beautifully styled hair**

- 210°C professional high heat for perfect salon results

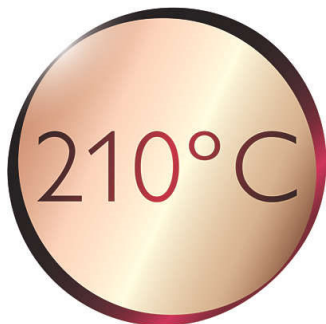
# PHILIPS

Curling iron  
2.5 cm (1")

HP4683/00

## Highlights

### 210°C professional temperature



This high temperature enables you change the shape of your hair, and gives you that perfect look like you've just come from the salon.

### Cool tip



The tip of the styler is made from a special heat insulating material to keep it cool; you can safely hold it while you're styling for optimal ease of use.

### Swivel cord



Useful swivel cord technology rotates the cord to prevent tangled wires.

### Safe usage

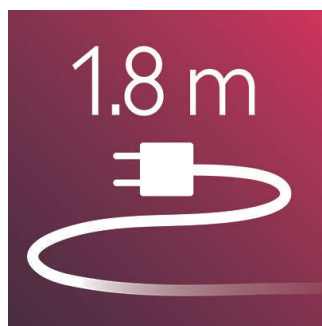


Some hair straighteners and curling irons have been equipped with an automatic shut-off feature. This feature has been designed to provide peace of mind. If left on, the appliance will automatically switch off after 60 min.

### Safety stand

The safety stand enables you to put the curler down safely during use.

### 1.8 m cord



1.8 m power cord

### Universal voltage



Worldwide voltage for getting the perfect travel companion

## Specifications

### Technical specifications

- Voltage: 220-240 V
- Cord length: 2,5 m
- Wattage: 50 W

### Serviceability

- Replacement



Issue date 2022-06-16

Version: 6.0.1

© 2022 Koninklijke Philips N.V.  
All Rights reserved.

Specifications are subject to change without notice.  
Trademarks are the property of Koninklijke Philips N.V.  
or their respective owners.

[www.philips.com](http://www.philips.com)