

# PHILIPS

## Hairdryer

## SpaShine

### KeraShine

BHC111



## Shine therapy for silky smooth hair

KeraShine range hair dryer, specially designed air outlet with Kerartin coating and millions of ion for a comprehensive and deep nourishment, ensures you will minimize frizz and achieve the beautiful shiny results.

### Easy to use

- Three flexible settings for more control
- Foldable handle for easy portability
- Easy storage hook for convenient storage

### Beautifully styled hair

- 1600W for gentle drying
- Concentrator for quick drying and easy styling

### Less Hair Damage

- Care for your hair with the keratin-infused ceramic coating
- Ionic conditioning for shiny, frizz-free hair
- ThermoProtect
- Less overheating with Even Heat Distribution technology

# Highlights

## Foldable handle



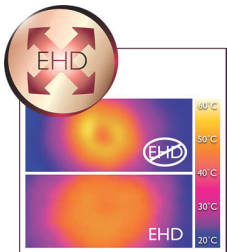
This hairdryer benefits from a foldable handle. The result is a small, compact hair dryer that will easily pack into the smallest spaces and you can take virtually anywhere.

## Three flexible settings



The speed and heat required can be easily adjusted to create the perfect end result. Three flexible settings ensure precise and tailored styling.

## Advanced EHD technology



Advanced Philips EHD technology means that your dryer uses an uniquely designed air outlet to ensure heat is always distributed very evenly - even at high temperatures - and prevents damaging hot spots. This gives

ultimate protection to the hair from overheating and thus helps to keep your hair healthy and shiny.

## Easy storage hook

The rubberised hook is located at the base of the handle and provides another storage option, particularly convenient for use in the home or when staying at a hotel.

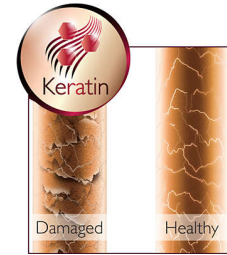
## Concentrator

The concentrator works by focusing the flow of air through the opening onto specific areas. This results in a quick drying and more precise styling.

## Ionic Care

Give your hair an instant care with ionic conditioning. Charged negative ions eliminate static, condition the hair and smooth down the hair cuticles to intensify the hair's shine and glossiness. The result is smooth and frizz-free hair that shines beautifully.

## Ceramic Keratin Coating



The keratin-infused ceramic nozzle provides an extra layer of care. Keratin helps your hair retain it's natural strength and shine.

## ThermoProtect



As built-in protection for your hair, ThermoProtect retains a constant caring temperature. This allows you to quickly dry your hair without over-drying, maintaining your hair's natural moisture level for shiny, healthy looking hair.

## 1600W for gentle drying



This 1600W hairdryer creates the optimum level of airflow and gentle drying power, for beautiful results every day.

# Specifications

## Accessories

Attachments: Nozzle

## Technical specifications

Cord length: 1.5 m

Voltage: 220-240 V

Wattage: 1600 W

## Design

Color: Black

## Features

Hanging loop

Settings: 3 heat/speed settings

Storage hook

## Service

2-year guarantee

## Caring technologies

Ionic Care

