

PHILIPS

NORELCO

Face, Head and
Body

Multigroom 9000

25 pieces

DualCut blades

6 hours runtime

Stainless steel design



MG7770/49



All-in-One Trimmer

Ultimate Precision: our most advanced blades

Enjoy best-in-class styling with our most advanced trimmer. DualCut blades deliver maximum precision for head-to-toe styling. The steel frame and rubber grips deliver superior control and the Lithium-ion battery yields 6 hours of runtime.

Easy to use

- Enough battery for 6 hours of runtime
- Easy to grip and control
- Easy to maintain
- Plug it in - or don't

Cutting performance

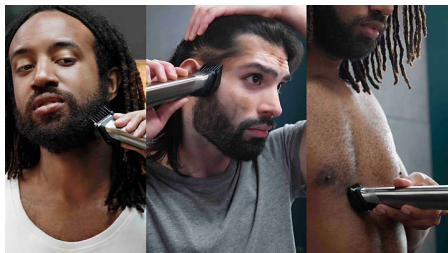
- Maximum precision with 2x more blades

Versatility

- Self-sharpening blades for a smooth result
- Keep those lines straight
- Get the details right
- Keeps nose and ear hair at bay
- Extra-wide hair trimmer to cover more areas faster
- 15 reinforced guards for head-to-toe trimming
- 25 pieces to trim and style your face, head and body

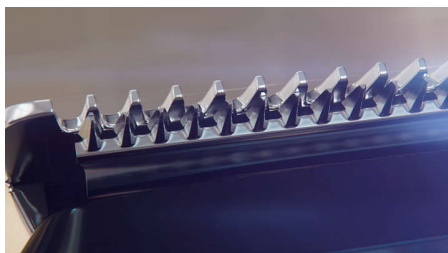
Highlights

25 pieces for face, head, body



25 pieces for all your trimming needs: a metal trimmer, a foil shaver, a detail metal trimmer, a nose and ear trimmer, an extra-wide hair trimmer, 6 hair trimming guards, 3 beard trimming guards, 2 stubble trimming guards, 1 adjustable beard comb, 1 body shaver, 2 body trimming guards, an eyebrow trimming guard, a travel case and a cleaning brush.

DualCut technology



This all-in-one hair trimmer features advanced DualCut Technology for maximum precision. It comes with double blades, and is designed to stay as sharp as day 1.

6 hour runtime



Tackle hair on any part of your body with a single charge. This Philips trimmer has a powerful battery that can be used for up to 6 hours per charge.

Fully washable trimmer



Philips Multigroom and all of its attachments are fully washable, so simply rinse them under the faucet for easy cleaning.

Cordless and corded use



The trimmer with a battery can conveniently be used cordless for up to 6 hours, or while plugged in for continual use.

Premium stainless steel frame



It's comfortable and easy to grip your styling trimmer, thanks to the stainless steel frame and rubber grip that improves control.

Steel trimmer



Create clean, straight lines and evenly trim through the thickest hair thanks to the multipurpose trimmer's precise steel blades. These non-corrosive blades won't rust, and they self-sharpen to last longer.

Foil shaver

The foil shaver quickly and comfortably shaves clean lines around your style.

Steel precision trimmer



The narrow design of the steel precision groomer makes it easy to precisely edge and finish small details.

Specifications

Create the look you want

Styling tools: Detail metal trimmer, Metal trimmer, Foil shaver, Nose & ear trimmer, Extra-wide hair trimmer, Bodyshaver, 3 beard trimming guards, 2 stubble trimming guards, 6 hair trimming guards, 2 body trimming guards, Eyebrow trimming guard, 3-7mm beard adjustable comb

Number of attachments/guards: 6 attachments, 15 guards

Bodygroom/Hairclipping/Facial: Long beard, Short beard, Stubble look, Sharp lines, Detailed styling, Goatee

Accessories

Pouch: Storage pouch

Maintenance: Cleaning brush

Power

Battery type: Lithium-ion

Charging: 2 hours charge, 5 min quick charge

Run time: 6 hours

Automatic voltage: 100-240 V

Design

Handle: No-slip rubber grip, Stainless steel handle

Service

10-year warranty

Cutting system

DualCut technology: Cut in two directions, An even and precise result

Self-sharpening blades

Reinforced trimming guards: Prevent bending and buckling

Ease of use

Display: Charging indicator, Battery low indicator

Cleaning: Fully washable

Maintenance free: No oil needed

Operation: Corded & Cordless use

