

PHILIPS

Wet and dry electric shaver

Shaver series 9000

V-Track Precision Blades

8-direction ContourDetectHeads

Cleansing brush & beard styler



S9911/11



Perfection in every pass

Cuts up to 20% more hair* in a single pass

The Shaver 9000 is our most advanced shaver yet. The unique contour detect technology offers exceptionally coverage over every contour of your face, and the V-Track system guides hairs into the best cutting position for the closest result.

Easy to use

- Shaver can be rinsed clean under the tap
- Intuitive icons make the functions easy to use
- With 2 year guarantee
- 60 minutes cordless shaving after a one-hour charge

A comfortable shave

- Personalize your shave by choosing between three settings
- Get a comfortable dry or refreshing wet shave with Aquatec

Designed for perfection

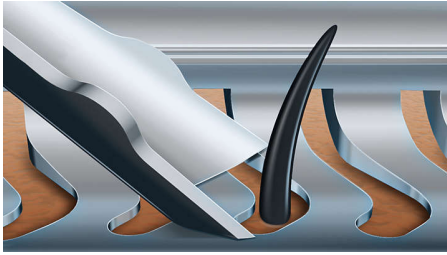
- Blades perfectly guide hairs into position for a close shave
- Heads flex in 8 different directions for a superb result

Get the most of your shaver

- Click-on beard styler with 5 length settings
- Click-on brush for thorough facial cleansing

Highlights

V-Track precision blade system

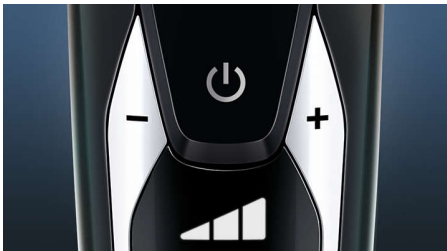


Get the perfect close shave. The V-Track Precision Blades gently position each hair in the best cutting position, even the flat laying and different length of hairs. Cuts 30% closer in less strokes leaving your skin in great condition.

8-direction ContourDetectHeads

Follow every contour of your face and neck with 8-directional ContourDetect heads. You'll catch 20% more hairs with every pass. Resulting in an extremely close, smooth shave.

Personal comfort settings



Choose between 3 modes to customize your shave: Sensitive – for a gentle, yet thorough shave. Normal – for a thorough, everyday shave. Fast – for a quick shave that saves you time.

Aquatec Wet & Dry



Choose how you prefer to shave. With the Aquatec Wet & Dry seal, you can opt for a quick yet comfortable dry shave. Or you can shave wet – with gel or foam – even under the shower.

SmartClick cleansing brush



Click on brush to cleanse more thoroughly than by hand*. Use it with the cleanser of your choice. It removes dead skin cells and increases micro-circulation, leaving your skin feeling fresh and radiant.

SmartClick beard styler



Change your look with the SmartClick Beard Styler attachment. Choose from 5 length settings to create anything from a perfect stubble look to a short, neatly trimmed beard. Rounded tips and combs are designed to prevent skin irritation.

Digital display



The intuitive display shows relevant information, enabling you to get the best performance out of your shaver: - 3 digit (%) battery indicator - Cleaning Indicator - Battery Low Indicator - Replacement Head Indicator - Travel Lock Indicator

60 minutes of cordless shaving



Now with the most superior battery life of all Philips Shavers, the charging system gives you two convenient options: 60 minutes of running time after a single one-hour charge, or quick charge for one full shave. All Shaver series 9000 models are designed to operate only in cordless mode to ensure safety in wet environments.

Fully washable shaver



Simply open the shaver head to rinse it thoroughly under the tap.

Specifications

Accessories

SmartClick: Deep facial cleansing brush, Beard styler

Pouch: Travel pouch

Power

Automatic voltage: 100-240 V

Battery Type: Lithium-ion

Run time: 60 min / 20 shaves

Charging: 1 hour full charge, Quick charge for 1 shave

Stand-by power: 0.1 W

Max power consumption: 9 W

Design

Color: Brushed metal red gold

Handle: Ergonomic grip & handling

Consumer Trade Item

Height: 20.5

Width: 9.8

Length: 11.8

Net Weight: .412

Gross Weight: .657

GTIN: 8710103725275

Country of origin: NL

Harmonized system code: 851020

Outer Carton

Height: 21.5

Width: 20.8

Length: 24

Gross Weight: 2.764

GTIN: 18710103725272

Service

Replacement head: Replace every 2 yrs with SH90

2-year guarantee

Shaving Performance

Contour following: 8-direction

ContourDetectHeads

Shaving system: V-Track Precision Blade

System, Super Lift & Cut Action

SkinComfort: AquaTec Wet & Dry

Personal Comfort Settings: Sensitive-Normal-Fast settings

Ease of use

Cleaning: Fully washable

Display: % Battery Level Indicator, Cleaning indicator, Battery low indicator, Replace shaving heads indicator, Travel lock indicator

