

PHILIPS

ThermoProtect
straightener

StraightCare
Essential

ThermoProtect technology

Keratin-infused plates

6 temperature settings

BHS376/00

Smooth and shiny hair with care and control

Specially designed for easy and fast styling with long Keratin-infused plates and 6 temperature settings. Care for your hair with ThermoProtect technology preventing overheating.

Ease of use

- Auto shut-off for safe usage
- Key-lock function for safe and easy storage
- Universal voltage for worldwide use
- 6 temperature settings for better control
- 100mm long plates for fast and easy straightening
- Fast heat-up time, ready to use in 30 sec

Beautifully styled hair

- Temperature range from 160°C up to 230°C

Care for your hair

- ThermoProtect technology
- Keratin ceramic plates for smooth gliding and shiny hair

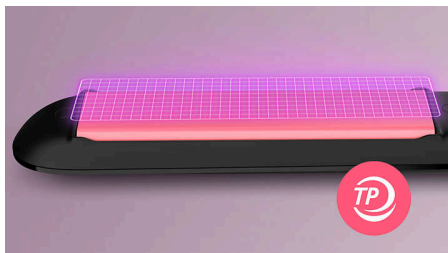
StraightCare Essential

ThermoProtect straightener

BHS376/00

Highlights

ThermoProtect technology



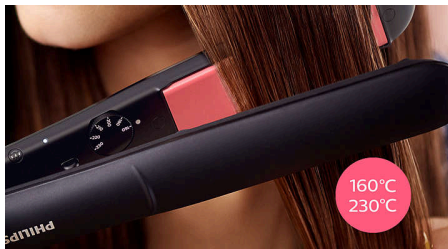
ThermoProtect technology distributes heat evenly across the plates, preventing overheating to protect your hair.

Keratin ceramic plates



Keratin-infused ceramic plates glide smoothly through your hair, for quick and easy styling.

Temperature range



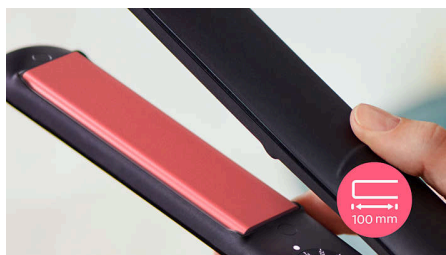
Choose between temperature range from 160°C up to 230°C to secure long-lasting result while minimizing risk of hair damage.

6 temperature settings



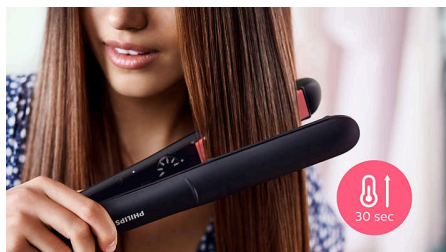
Variable temperature settings for better control. Lower temperatures for last minute touch ups and gentle styling. Higher temperatures for long lasting results.

100mm long plates



The longer 100mm plates enable better contact with the hair to help you achieve perfect straightening results easier and in less time.

Fast heat-up time



The straightener has a fast heat-up time, being ready to use in 30 seconds.

Auto shut-off



The styler has an automatic shut-off function for safe usage. It automatically switches off after 60 minutes.

Key-lock function



The plates can be locked together for safe and easy storage.

Universal voltage



Compatible with 110-240 volts. Can be used wherever you travel in the world.

Specifications

Technical specifications

Cord length: 1.8 m

Voltage: 110-240 V

Heat-up time: 30 sec

Plate size: 28X100mm

Type of temperature control: Turning rheostat

Styling temperature: 160°C - 230°C

Off mode power: < 0.5 W

Consumer Trade Item

Height: 9 cm

Width: 34.6 cm

Length: 5.4 cm

Net weight: 0.412 kg

Gross weight: 0.506 kg

GTIN: 8710103991854

Country of origin: CN

Harmonized system code: 85163200

Outer Carton

Height: 18.5 cm

Width: 20 cm

Length: 36 cm

Net weight: 2.472 kg

Gross weight: 3.273 kg

GTIN: 18710103991851

Features

Swivel cord

Material plates: Keratin-infused ceramic plates

Storage hook

Plate lock

Ready to use indicator

Service

2-year worldwide guarantee

