

PHILIPS

Hair clipper

With adjustable comb

QC5130/40



Easy, precise, reliable

hair clipper with adjustable integrated comb

Philips Norelco hair clipper offers a perfectly even haircut in a very easy way. The integrated comb is adjustable, so all hair lengths can be achieved without changing a comb. No maintenance is needed - oiling is not necessary.

Best performance that feels great

- Rounded blades and combs prevent scratching the skin
- High precision length settings (intervals of 2mm)

Brings maximum ease of use

- Compact and lightweight for easy and less-tiring handling

Create the look you want

- 10 secured length settings up to 21mm

Provides optimal power

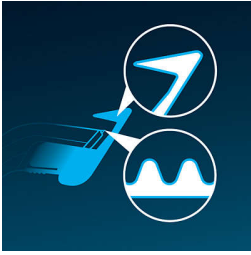
- Corded and cordless use for maximum power and freedom
- 40 minutes of cordless use for optimal freedom

The look you want without changing combs

- Adjustable comb for all length settings without hassle

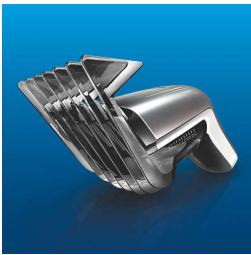
Highlights

Rounded blades and combs



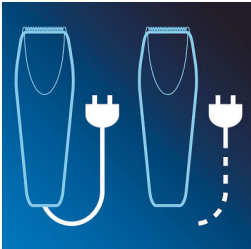
The blades and the tips of the comb are rounded to prevent scratching the skin during operation.

Compact and lightweight



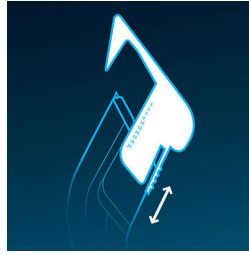
Compact and lightweight for easy and less-tiring handling

Corded and cordless use



Use your Philips trimmer corded or cordless with the recharged battery for maximum power and freedom.

Adjustable comb



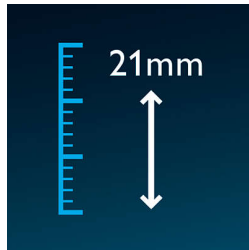
The Philips hair clipper has an integrated comb that can be adjusted by simply pushing it. A total of 10 length settings are available for hair lengths up to 21mm

40 minutes of cordless use



10-hour full charge for up to 40 minutes of cordless use

High precision length settings



The length settings are in 2mm intervals, for optimal precision.

10 secured length settings

Select and locks your desired length within a versatile range of possible lengths.

Specifications

Power system

Battery type: NiMH

Running time: 40 minutes

Charging time: 10 hours

Usage: Corded/cordless

Accessories

Cleaning brush

Design

Shape: Ergonomic

Service

2-year worldwide guarantee

Cutting system

Cutting element: Stainless steel blades

Cutter width: 41 mm

Number of length settings: 10

Range of length settings: up to 21 mm

Precision (size of steps): By 2mm mm

Self-sharpening stainless steel blades

Comb type: Regular

Rounded tips: Skin friendly

Ease of use

Charging indicator: 1 LED

Maintenance free - No Oil need

