

PHILIPS

Straightener

Care

HP8333/03



Gentle straightening with ion shine

Straightener with smooth plates

The Philips Care Straightener has the smoothest plates, so it reduces significantly frictions, avoids hair breakage and leaves your hair with healthy smooth shine

Ease of use

- Automatic shut-off after 60 min
- Closing lock to close the handle for easy and safe storage
- Universal voltage
- Fast heat up time, ready to use in 60 seconds
- Swivel cord to prevent tangled wires

Beautifully styled hair

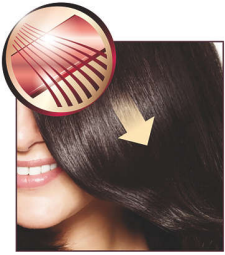
- 2x as smooth on your hair with SilkySmooth ceramic plates

Less hair damage

- Accurate control 220°C with variable temperature
- More care with ion conditioning for shiny, frizz-free hair

Highlights

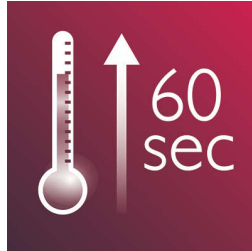
SilkySmooth ceramic plates



Ceramic is microscopically smooth and durable by nature, and is therefore one of the best materials for straightening plates. The SilkySmooth plates are carefully processed to enhance the gliding and caring properties of the ceramic, giving you perfect shiny hair.

hair cuticles to intensify the hair's shine and glossiness. The result is hair that is beautifully shiny, smooth and frizz-free.

Instant heat up



The straightener has a fast heat up time, being ready to use in 60 seconds

Safe usage



Some hair straighteners and curling irons have been equipped with an automatic shut-off feature. This feature has been designed to provide peace of mind. If left on, the appliance will automatically switch off after 60 min.

220°C variable temperature



Accurate control 220°C with variable temperature

Handle closing lock



The straightener has a closing lock mechanism. Located at the base of the straightener, this locks plates, making storage quick and easy and helping to protect the straightener from accidental damage.

Universal voltage



Worldwide voltage for getting the perfect travel companion

Ionic Care



Give your hair an instant care with ionic conditioning. Charged negative ions eliminate static, condition the hair and smooth down the

Swivel cord

Useful swivel cord technology rotates the cord to prevent tangled wires.



Specifications

Technical specifications

Cord length: 1.8 m

Voltage: 110-240 V

Heating time: 60s

Maximum temperature: 220 °C

Heater type: PTC

Features

Ceramic coating: SilkySmooth Ceramic
Swivel cord

Hair type

End result: Straight

Hair thickness: Medium, Thick, Thin

Hair length: Long, Medium, Short

Service

2-year worldwide guarantee

