

**PHILIPS**

## Hair clipper

Hairclipper series  
3000

Self-sharpening stainless steel  
blades

13 length settings

Corded use

HC3505/15

## Fast, even haircut

### Faster hairclipping without clogging

The Hair Clipper 3000 by Philips gives you a fast, even haircut. The device's 13 length settings, Trim-and-Flow technology, and DualCut technology lets you quickly achieve an even finish.

#### Easy to use

- Mains powered for constant performance during use
- Quick release washable blades
- Ergonomic Design with a Comfortable Grip

#### Performance

- Trim-and-Flow Tech for a Hassle-Free Perfect Haircut
- Maximum precision with Philips DualCut system

#### Precise length control

- Adjust hair length from 0.5mm to 23mm easily

#### Built to last

- Maintenance-Free Blades: No Oiling Needed, Ever
- Unlock Longer Battery Life via DuraPower's Optimized Design
- Self-sharpening steel blades, no oil required
- 2-Year Global Warranty for Purchase Protection

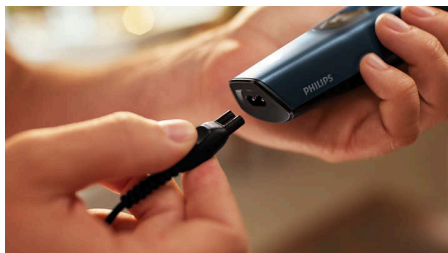
# Hairclipper series 3000

Hair clipper

HC3505/15

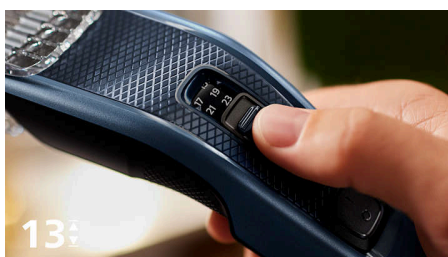
## Highlights

### Constant corded power



The 1.8m long power cord provides constant power.

### 13 Length Settings with Effortless Slide Button



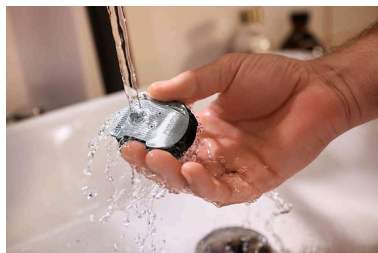
Customize your hair length precisely with ease. Choose from 12 settings between 1mm to 23mm in 2mm increments. For a closer trim, simply remove the comb for a precise 0.5mm cut.

### Self-sharpening stainless steel blades



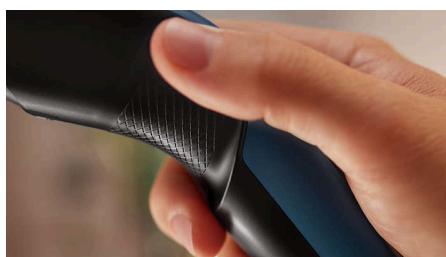
Looking good has never been easier. Our hairclippers boast self-sharpening blades that are incredibly long-lasting, ensuring precision grooming from day one to year five and beyond.

### Washable blades



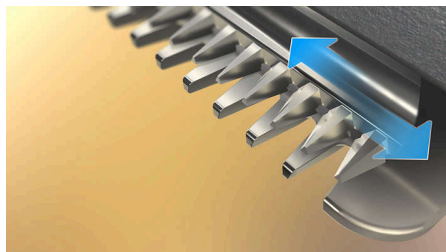
Effortlessly clean your electric hair clippers. Just click open the head to release and clean the blades

### Comfortable grip



Philips clippers feature a textured grip for easy handling, ensuring you can cut your hair with control and comfort.

### DualCut Technology



Enjoy your desired look with precision. Philips DualCut technology features a double blade system designed to maintain day-one sharpness, consistently delivering equally sharp results every time.

### Zero maintenance



Experience clipping power that's easy to maintain — Philips' blades never need oiling.

### Built to last



A grooming product built to last: the warranty offers coverage for up to 5 years, including a 2-year standard global warranty, with an additional 3 years available upon registering the device within 90 days of purchase.

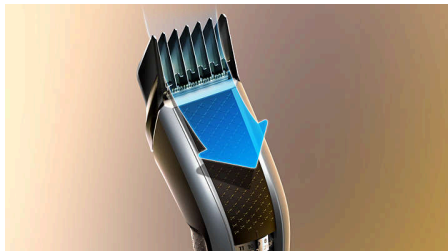
## Hairclipper series 3000

Hair clipper

HC3505/15

# Highlights

### Trim-and-Flow technology



Effortlessly achieve your perfect haircut. Our innovative comb is designed to prevent hair from getting stuck or tangled, ensuring a smooth cutting experience from start to finish.

### DuraPower



A device you can always rely on for a great look. DuraPower technology protects the motor and battery from overworking, effectively extending the clipper's lifespan.

# Hairclipper series 3000

Hair clipper

HC3505/15

## Specifications

### Accessories

**Maintenance:** Cleaning brush

**Comb:** Adjustable hair comb

### Power

**Automatic voltage:** 100-240 V

### Design

**Handle:** Ergonomic grip & handling

### Consumer Trade Item

**Height:** 22.4 cm

**Width:** 14 cm

**Length:** 7 cm

**Net weight:** 0.233 kg

**Gross weight:** 0.351 kg

**GTIN:** 8710103855415

**Country of origin:** ID

**Harmonized system code:** 85102000

### Outer Carton

**Height:** 23.8 cm

**Width:** 15.1 cm

**Length:** 29.1 cm

**Net weight:** 0.932 kg

**Gross weight:** 1.558 kg

**GTIN:** 18710103859694

### Service

**Up to 5-year guarantee**

### Cutting system

**Trim-n-Flow technology**

**Cutting element:** Stainless steel blades

**Cutter width:** 41mm

**Range of length settings:** From 0.5 to 23 mm

**Number of length settings:** 13

**Precision (size of steps):** By 2mm

### Pallet Layer

**Height:** 23.8 cm

**Width:** 80 cm

**Length:** 120 cm

### Ease of use

**Maintenance free:** No oil needed

**Cleaning:** Removable cutter, Washable blades

**Operation:** Corded use only

