

Philips
Multi-Styler

10 attachments
Ceramic

HP4698/01



Create the latest styles for every occasion

SalonMultistylist 10 in 1

Want to count the ways to get great styles? The SalonMultistylist 10 in 1 has ten versatile ceramic styling attachments. Perfect for creating all the styles you can think of...and more.

Ease of use

- Cool tip for easier and safer use
- Swivel cord to prevent tangled wires
- Automatic shut-off after 60 min
- Safety stand for easy use
- Ready to use indicator
- Heat resistant pouch
- Included: hairclips for easy styling
- 1.8 m power cord

Beautifully styled hair

- Ceramic plates for smooth gliding and shiny hair
- Slide-on spiral for beautiful ringlets
- Large curling tong for big curls
- Small curling tong for tight curls and ringlets

PHILIPS

Highlights

Ceramic plates



Ceramic is microscopically smooth and durable by nature and it is one of the best materials for straightening plates. The plates glide effortlessly through your hair, giving you perfect shiny hair.

Straightener attachment

The Ceramic plates glide effortlessly through your hair, giving you perfect straight and shiny hair.

10 different attachments

Every hairstyle you can imagine is possible with the versatile styling tools. Be creative!

Slide-on brush



This attachment can be easily placed on tong to create additional volume and beautiful wavy styles.

Slide-on spiral

Just follow the curves to create the most beautiful ringlets, it has never been so easy!

Small curling tong

If you want to create tight curls or ringlets, you need to use a curling iron with a small diameter.

Flat tong

With this original tong shape you can be creative and make fantastic shapes, textures and waves.

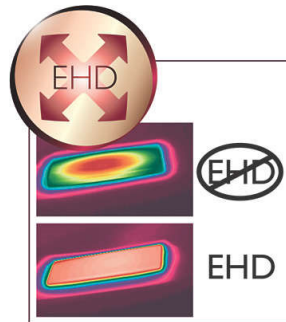
Large curling tong

If you want to create beautiful curls or waves, you need this large curling attachment with a large sized diameter.

Spiral curling tong

The defined spirals on the curling tong give you loose waves in an easy way.

EHD+ technology

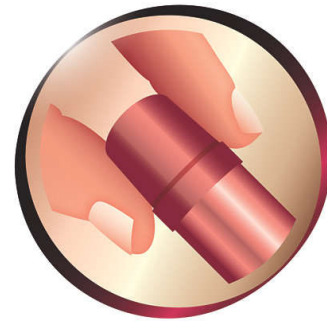


Advanced Philips EHD+ technology means that your styler will always distribute the heat very evenly - even at high temperatures, and prevents damaging hot spots. This gives added protection and thus helps to keep your hair healthy and shiny.

Hairclips

Use the hairclips to make sections, this will help you to style all your hairs easily.

Cool tip



The tip of the styler is made from a special heat insulating material to keep it cool; you can safely hold it while you're styling for optimal ease of use.

Swivel cord



Useful swivel cord technology rotates the cord to prevent tangled wires.

Ready to use indicator



This shows when the styler has reached the right temperature, so you can instantly see when you're ready to style.

Heat resistant pouch

This Heat Resistant pouch is perfect for styling on the go. Forget waiting for your styler to cool down. Simply store using the heat resistant pouch included.

Specifications

Technical specifications

- Color/finishing: Metallic night blue with dark navy accent
- Voltage: 100-240 V
- Power: 25 W
- Cord length: 1.8 m
- Material housing: PC

Weight and dimensions F-box

- Net product dimensions excl. attachments: 296x40x80.5(H) mm
- F-box dimensions: 350x70x240(H) mm
- Weight of net product incl. attachments: 734 g
- F-box volume: 5880 cm³
- F-box weight (including product): 1060 g

Hair type

- End result: Multi-styles
- Current hair style: Straight, Wavy, Curly
- Hair thickness: Thin
- Hair length: Long, Medium
- For fragile hair

Pallet

- Number of layers: 5
- Pallet dimensions: 1200x800x100 mm
- Number of A-boxes per layer: 6
- Pallet quantity: 240 pcs

Weight and dimensions A-box

- Number of F-boxes in A-box: 8
- A-box dimensions: 590x255x370(H) mm
- A-box volume: 55666.5 cm³
- A-box weight: 800 g

Serviceability

- Replacement

Logistic data

- Country of origin: China
- EAN F-box: 8710103203926
- CTV code: 8844-698-01
- EAN A-box: 8710103203933



Issue date 2022-06-25

Version: 2.1.1

© 2022 Koninklijke Philips N.V.
All Rights reserved.

Specifications are subject to change without notice.
Trademarks are the property of Koninklijke Philips N.V.
or their respective owners.

www.philips.com