

PHILIPS

Dryer

IonBoost

HP8216



Shine therapy for silky smooth hair

The KeraShine hair dryer

Get the style you want whilst caring for your hair. The Shine and Protect hair dryer offers 1600W of professional drying power

Easy to use

- Three flexible settings for more control

Beautifully styled hair

- 1600W for gentle drying

Less Hair Damage

- Cool air setting for gentle drying
- ThermoProtect temperature setting
- Ionic Care
- Less overheating with Even Heat Distribution technology
- Less overheating with Even Heat Distribution technology

Highlights

1600W for gentle drying



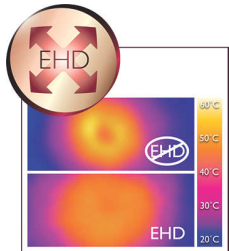
This 1600W hairdryer creates the optimum level of airflow and gentle drying power, for beautiful results every day.

Three flexible settings



The speed and heat required can be easily adjusted to create the perfect end result. Three flexible settings ensure precise and tailored styling.

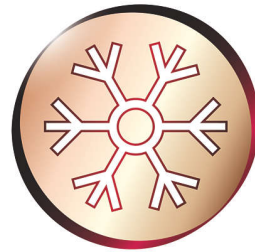
Advanced EHD technology



Advanced Philips EHD technology means that your dryer uses an uniquely designed air outlet to ensure heat is always distributed

very evenly - even at high temperatures - and prevents damaging hot spots. This gives ultimate protection to the hair from overheating and thus helps to keep your hair healthy and shiny.

Cool air setting



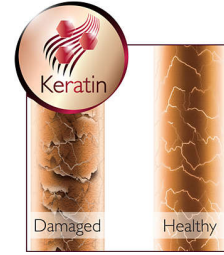
A cold air setting is a low heat setting that gently dries the hair to minimize damage. This function is suitable for all hair types, but especially for fine, dry or damaged hair. It's a perfect setting for the hot summer season!

Shine Ionic Care



Efficient anti-static, Ion conditioning for shiny, frizz free hair.

Advanced EHD technology



Advanced Philips EHD technology means that your dryer uses an uniquely designed and keratin coated air outlet, to ensure heat is always distributed very evenly - even at high temperatures - and prevents damaging hot spots. This gives ultimate protection to the hair from overheating and thus helps to keep your hair healthy and shiny.

ThermoProtect temperature



The ThermoProtect temperature provides the optimal drying temperature and gives additional protection from overheating the hair. With the same powerful airflow, you will get the best results in a caring way.

Specifications

Accessories

Attachments: Nozzle

Technical specifications

Cord length: 1.6 m

Wattage: 1600 W

Design

Color: Black

Features

Hanging loop

Settings: 3 heat/speed settings

Coolshot

Service

2-year guarantee

