

PHILIPS

Straightener

SalonStraight Pro
XL

205°C

Ceramic

HP4667/00



Styles in seconds, stays all day

SalonStraight Pro

Turn heads with your style. Choose the SalonStraight Pro – with its high quality Ceramic plates and professional styling temperature of 205°C – for long-lasting shiny, straight results in an instant.

Ease of use

- Swivel cord to prevent tangled wires
- Easy lock for convenient storage
- Automatic shut-off after 60 min
- Universal voltage

Beautifully styled hair

- Digital heat settings to ensure super smooth results
- Ceramic plates for smooth gliding and shiny hair
- 205°C professional high heat for perfect salon results

Less hair damage

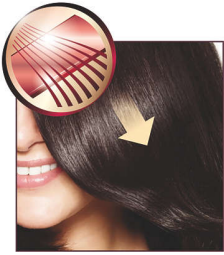
- EHD+ technology for more protection and shinier results

Time saving

- Instant heat: ready to use within 30 seconds
- Extra wide plates for better results with thick or long hair

Highlights

Ceramic plates



Ceramic is microscopically smooth and durable by nature and it is one of the best materials for straightening plates. The plates glide effortlessly through your hair, giving you perfect shiny hair.

Digital heat settings

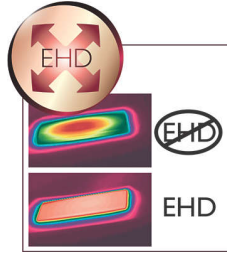


Digital heat settings make it easy to quickly choose the function you need or adjust the styling temperature using the digital display. This enables you to select the perfect temperature for your specific hair and needs. The result is perfect styling at the touch of a button.

205°C professional temperature

This high temperature enables you change the shape of your hair, and gives you that perfect look like you've just come from the salon.

EHD+ technology



Advanced Philips EHD+ technology means that your styler will always distribute the heat very evenly – even at high temperatures, and prevents damaging hot spots. This gives added protection and thus helps to keep your hair healthy and shiny.

Wide plates



These extra wide straightening plates have been designed specifically for thick or long hair. The increased plate width can straighten more hair in one go and will help to reduce the time taken.

Instant heat

Now more waiting around for your styler to heat up, this allows you to switch on and get styling.

Swivel cord



Useful swivel cord technology rotates the cord to prevent tangled wires.

Easy lock



The straightener has an easy lock mechanism. Located at the base of the straightener, this flip lock makes storage quick and easy and will help to protect the straightener from accidental damage.

Safe usage



Some hair straighteners and curling irons have been equipped with an automatic shut-off feature. This feature has been designed to provide peace of mind. If left on, the appliance will automatically switch off after 60 min.

Universal voltage



Worldwide voltage for getting the perfect travel companion

Specifications

Technical specifications

Voltage: 220-240 V

Maximum temperature: 205 °C

Serviceability

Replacement

